

You can help **stop** the spread of **measles**

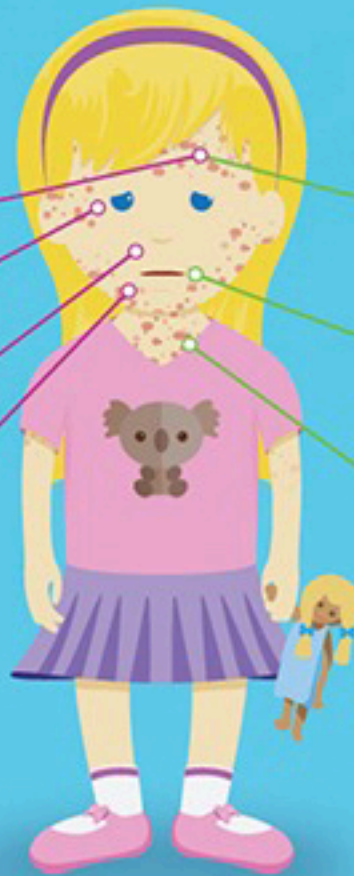
Early symptoms

High fever

Watery eyes

Runny nose

Cough



Later symptoms

High fever

Koplik's spots

Small red spots with blue-white centers inside the mouth

Rash

Typically appears three to five days after the onset of early symptoms, spreading from forehead downward

Take action

Call your child's pediatrician immediately if you suspect your child:

- May have measles.
- Is not immunized against measles.
- Has been exposed to someone with measles.



To prevent spreading the disease, it is important to contact your child's pediatrician before going to a clinic or office so staff can prepare for your visit to avoid exposing others.



Discuss any vaccine-related decisions with your child's pediatrician.



Remember that measles, a serious childhood disease, can be prevented with a vaccine. Vaccines prevent many harmful diseases and are safe.



choa.org/measles



Children'sSM
Healthcare of Atlanta