



Planned Extubation >48 Hours
Target State Behavioral Scale (SBS) -1 to -2

Use Pain, Agitation, & Delirium Assessment Tools¹

[First Line Therapy]

Fentanyl IV²

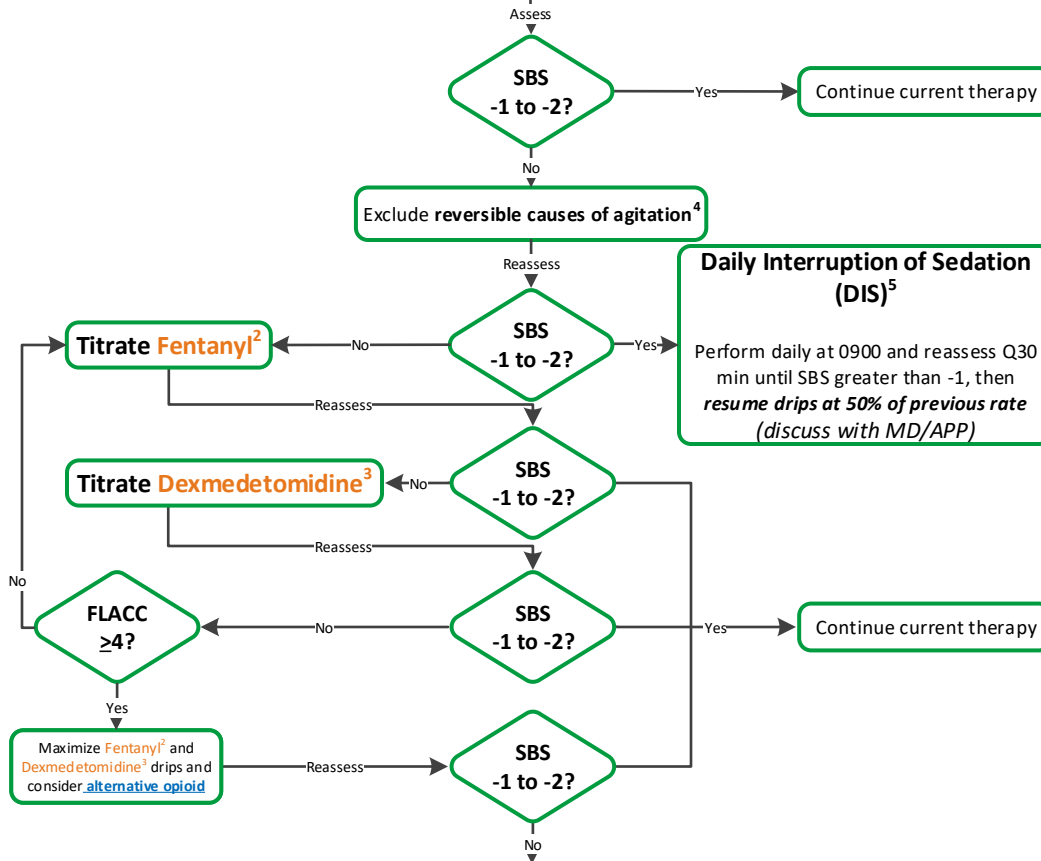
2mcg/kg/hr

Bolus 2mcg/kg Q 1hr prn

FLACC ≥ 4, SBS >0, or prior to procedure

Dexmedetomidine IV³

Start infusion at 0.5 mcg/kg/hr



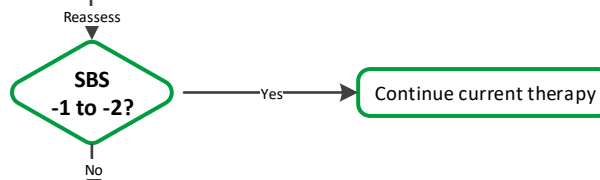
[Second Line Therapy]

≤6 months of age

Midazolam IV 0.05 mg/kg Q1 hr PRN
(Max 2 mg)

>6 months of age

Lorazepam IV 0.05 mg/kg Q2 hr PRN
(Max 2 mg)



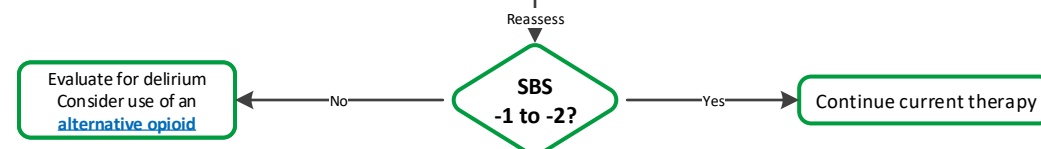
[Third Line Therapy]

Midazolam Drip⁶

<6 mos and administering >3 non-procedural PRN doses/4 hr
Midazolam 0.05 mg/kg/hr (Max 2 mg/hr)
Bolus 0.05 mg/kg (Max 2 mg) Q1 hr PRN

Lorazepam Drip⁷

>6 mos and administering >3 non-procedural PRN doses/8 hr
Lorazepam 0.05 mg/kg/hr (Max 2 mg/hr)
Bolus 0.05 mg/kg (Max 2 mg) Q2 hr PRN



Inclusion Criteria

Day of Life (DOL) <30 days: Norwood, Truncus, ASO, TAPVR, Open Chest, ECMO, IAA, All Neonatal Bypass

DOL ≥30 days:

- Hemodynamically unstable
- Significant bleeding requiring multiple products
- Multi-organ system dysfunction (MOSD)
- Pulmonary disease
- Intubated prior to OR
- Pulmonary hypertension/crisis
- Open chest
- Arrhythmias

¹Pain, Agitation, & Delirium Assessment Tools

- Pain/Agitation assessment Q1 hr minimum
- **SBS Q1 hr & 30 minutes after an intervention**
- **CAPD Q12 hr at 0400 & 1600**

²Fentanyl Titration

- If SBS is >-1 or patient has received >3 non-procedural PRN doses within 4 hrs, increase by 1 mcg/kg/hr Q15 min until goal SBS (Max dose 4 mcg/kg/hr or 200 mcg/hr)
- If SBS is -3 or patient has received <3 non-procedural PRN doses within 4 hrs, decrease by 1 mcg/kg/hr Q15 min until goal SBS

³Dexmedetomidine Titration

- If SBS is >-1, increase by 0.2 mcg/kg/hr Q15 min until goal SBS (Max of 1.5 mcg/kg/hr)
- If SBS is -3, decrease by 0.2 mcg/kg/hr Q15 min until goal SBS

Contraindications:

- Severe bradycardia, hypotension, heart block

⁴Reversible Causes of Agitation

- Correct environmental and physical factors that could be causing discomfort and/or agitation ([see delirium preventative measures](#))

⁵Daily Interruption of Sedation (DIS)

Contraindications:

- Planned procedure
- Hemodynamically unstable (unrelated to sedation)
- Significant mechanical ventilation requirements (FiO₂ >60%, peep >10, HFOV, iNO)

⁶Midazolam Titration

- If SBS >-1 or >3 non-procedural PRN doses are administered within 4 hrs, increase drip by 0.05 mg/kg/hr
- If SBS -3 or patient has received <3 non-procedural PRN doses in 4 hrs, decrease drip by 0.05 mg/kg/hr

⁷Lorazepam Titration

- If SBS >-1 or >3 non-procedural PRN doses are administered within 8 hrs, increase drip by 0.05 mg/kg/hr
- If SBS -3 or patient has received <3 non-procedural PRN doses in 8 hrs, decrease drip by 0.05 mg/kg/hr