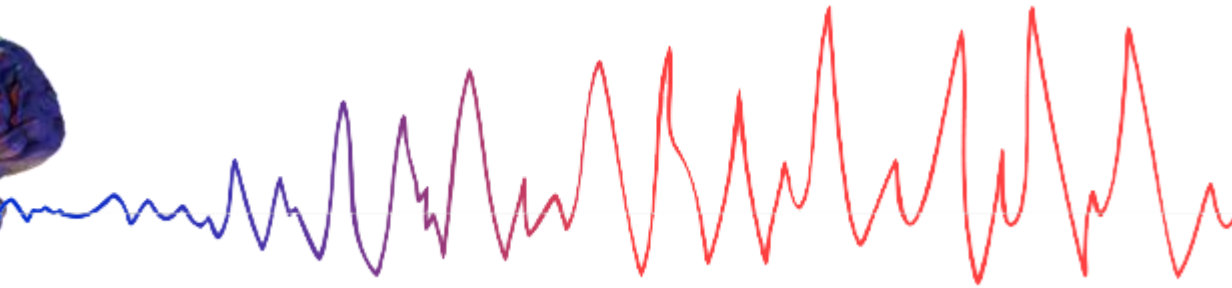
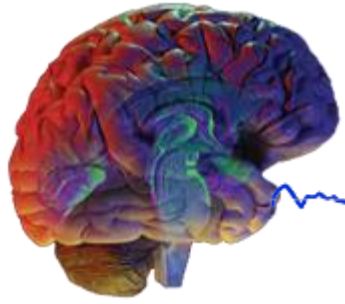


# Epilepsy Care in the School Setting

---

Children's Epilepsy Educational Video Series





# Epilepsy Care in the School Setting

---

## Children's Epilepsy Educational Video Series

Presented by Susan McCallum, MSN, RN  
Children's Comprehensive Epilepsy Center  
404-785-3720  
[www.choa.org](http://www.choa.org)



# Course Disclaimer

---

This is general information and not specific medical advice for you, your child, or loved one. Always consult your doctor or other healthcare provider if you have any questions or concerns. Call 911 or go to the nearest emergency department in case of an urgent concern or emergency.

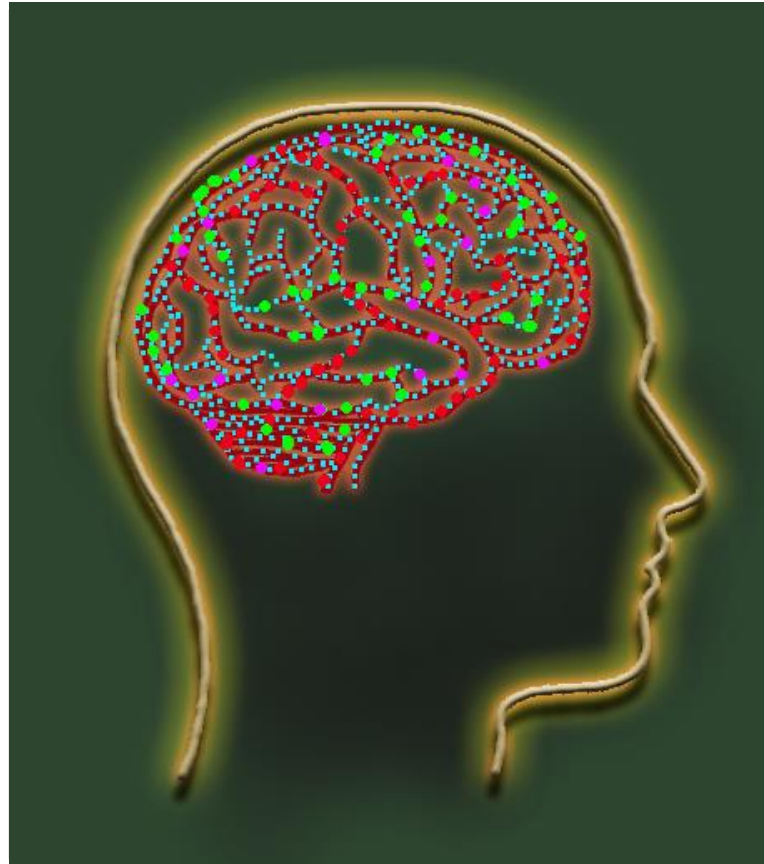


# Educational Activity Disclosure

## Epilepsy Seizure Phases and Classifications - Part 2 of 4

Disclosures	Action
Criteria for Successful Completion	<ul style="list-style-type: none"><li>• View entire recording</li><li>• Completion of evaluation</li></ul>
Conflicts of Interest Statements for Planning Committee	The planning committee members have no relevant financial relationship to declare.
Conflicts of Interest Statements for Faculty/Presenters/ Authors	The content experts/faculty/presenters/authors have no relevant financial relationship to declare.
Commercial Support	No commercial support is being received for this event.
Sponsorship	No sponsorship is being received for this event
Non-endorsement of Products	No products are being displayed at this event
Continuing Education	<p><b><i>This continuing nursing education activity was provided by Children's Healthcare of Atlanta.</i></b> Children's Healthcare of Atlanta is an approved provider of continuing nursing education by the <b>Alabama State Nurses Association</b>, an accredited approver by the American Nurses Credentialing Center's Commission on Accreditation.</p> <p><b>Contact hours: 0.5</b> <b>Activity ID: 2017-0508-01</b> <b>Expiration Date: 05/08/2019</b></p>





Credit: Martin Allison

# Epilepsy Seizure Phases & Classifications

---

Children's Comprehensive Epilepsy Center

Presented by Susan McCallum, MSN, RN  
Children's Comprehensive Epilepsy Center  
404-785-3720  
[www.choa.org](http://www.choa.org)

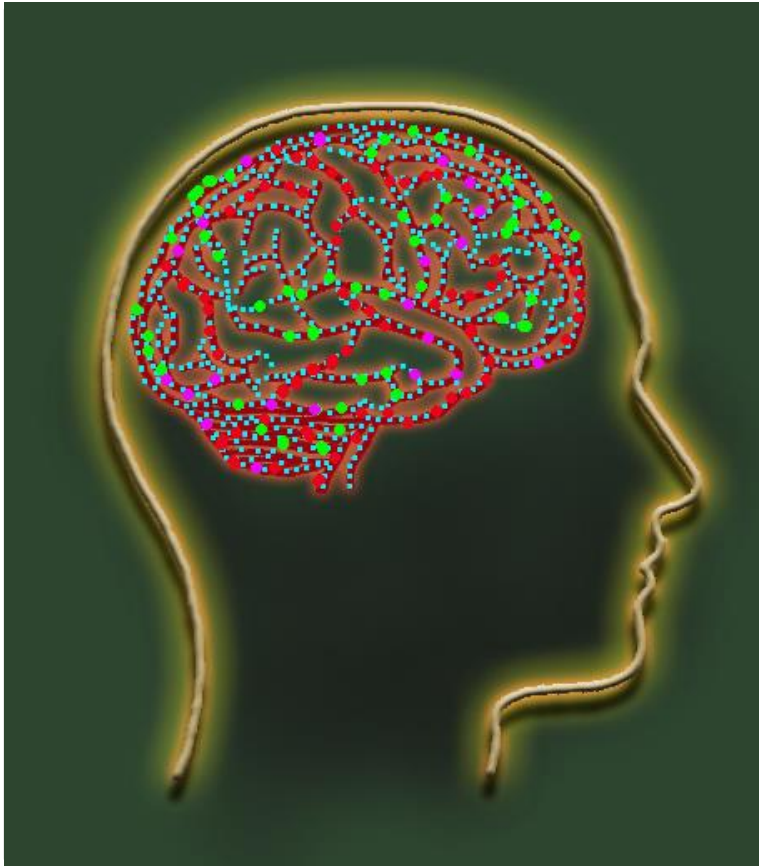
Children's Healthcare of Atlanta



# Main Focus

---

This education video is intended for school nurses who:



Credit: Martin Allison



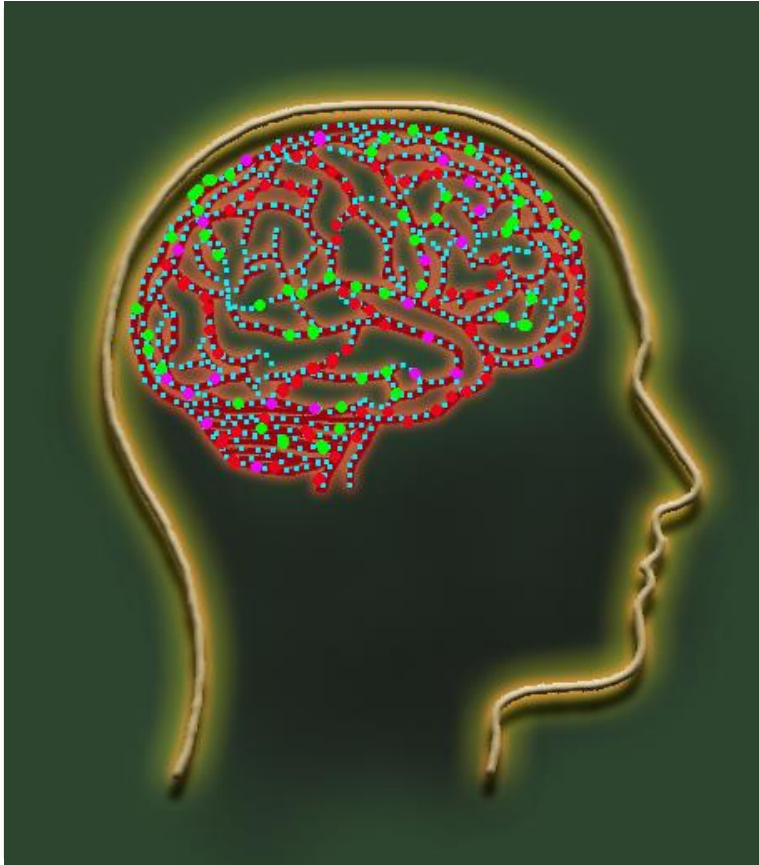


# Main Focus

---

This education video is intended for school nurses who:

- Care directly for students with epilepsy



Credit: Martin Allison



# Main Focus

---

This education video is intended for school nurses who:

- Care directly for students with epilepsy
- Provide first aid for seizures, including seizure medication



Credit: Martin Allison



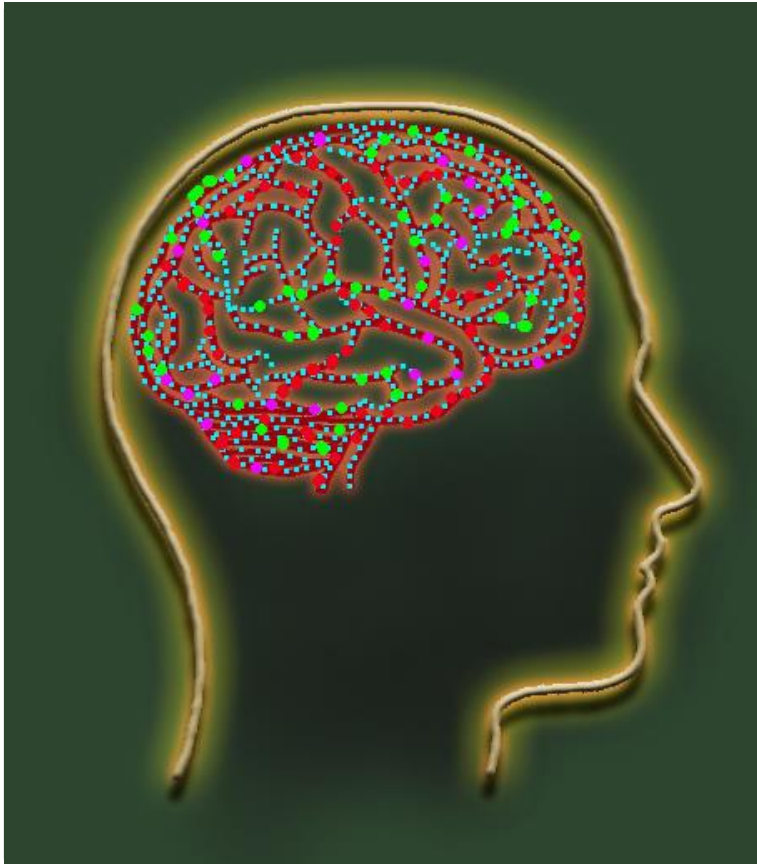


# Main Focus

---

This education video is intended for school nurses who:

- Care directly for students with epilepsy
- Provide first aid for seizures, including seizure medication
- May teach non-licensed school personnel such as teachers, coaches, or after school staff how to respond to students experiencing a seizure

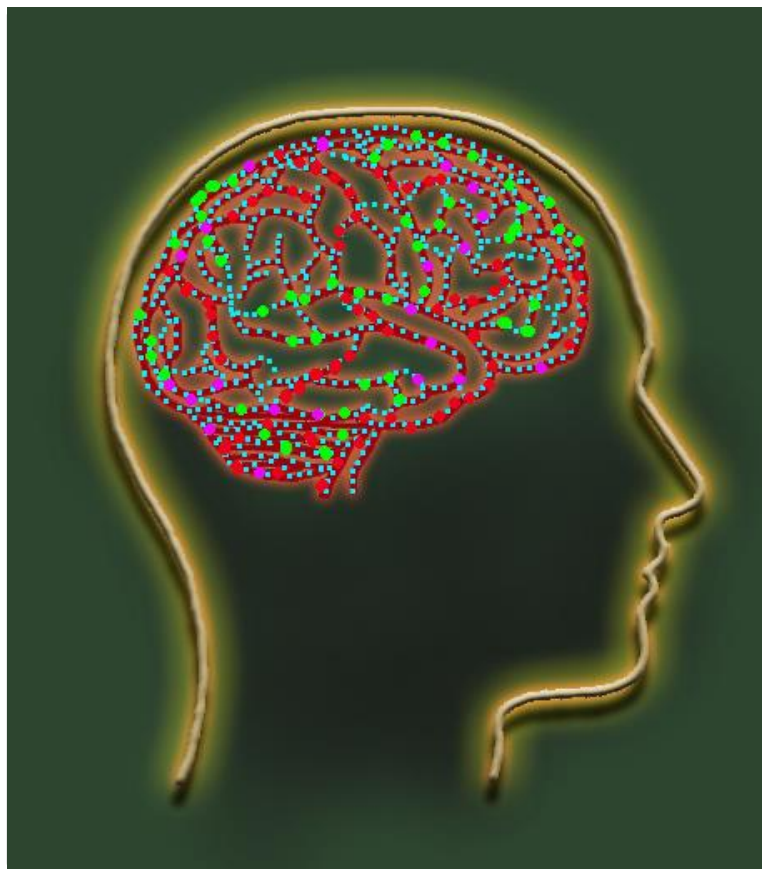


Credit: Martin Allison



# Learning Objectives

---



Credit: Martin Allison



# Learning Objectives

---

- List the phases of a seizure



Credit: Martin Allison



# Learning Objectives

---

- List the phases of a seizure
- Explain the changes in seizure classification



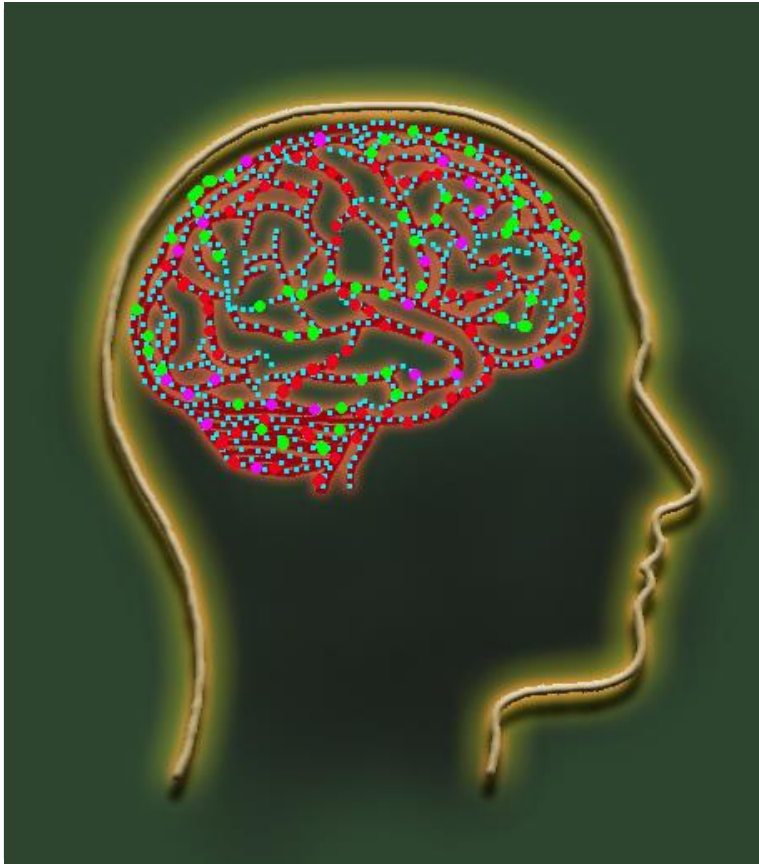
Credit: Martin Allison



# Learning Objectives

---

- List the phases of a seizure
- Explain the changes in seizure classification
- Describe the different types of seizures as classified by the ILAE



Credit: Martin Allison



# Seizure Phases

---



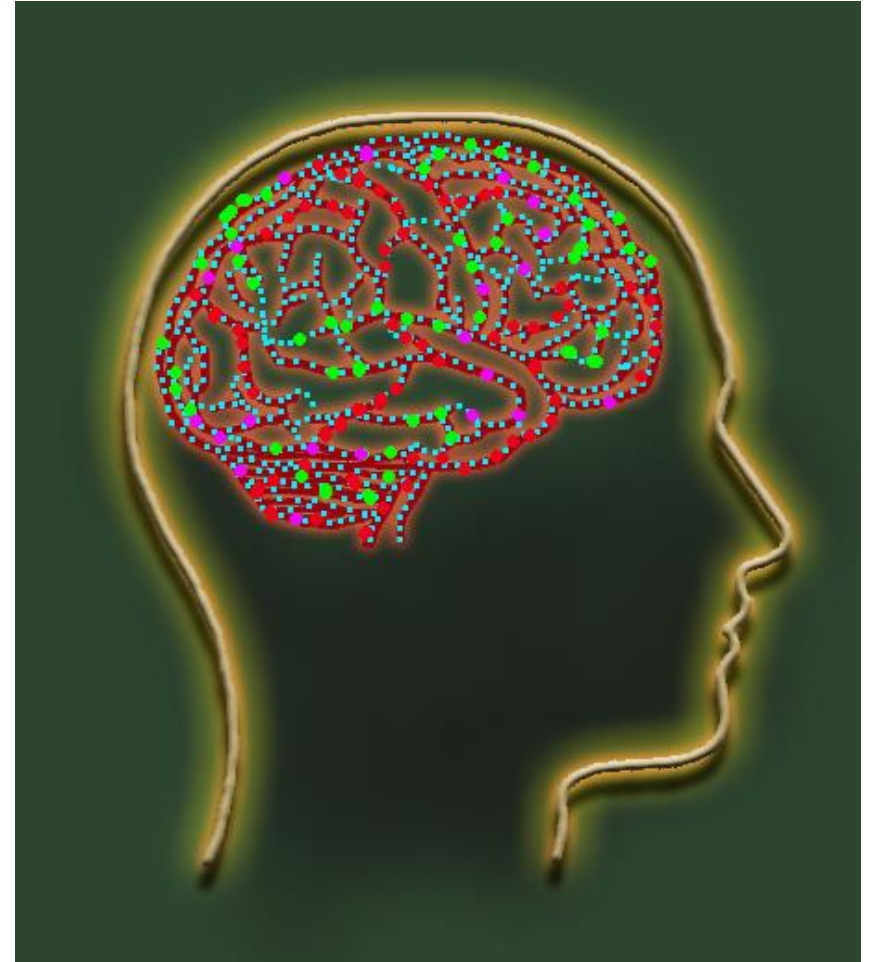


# Seizure Phases

---

Aura

---



Credit: Martin Allison



# Seizure Phases

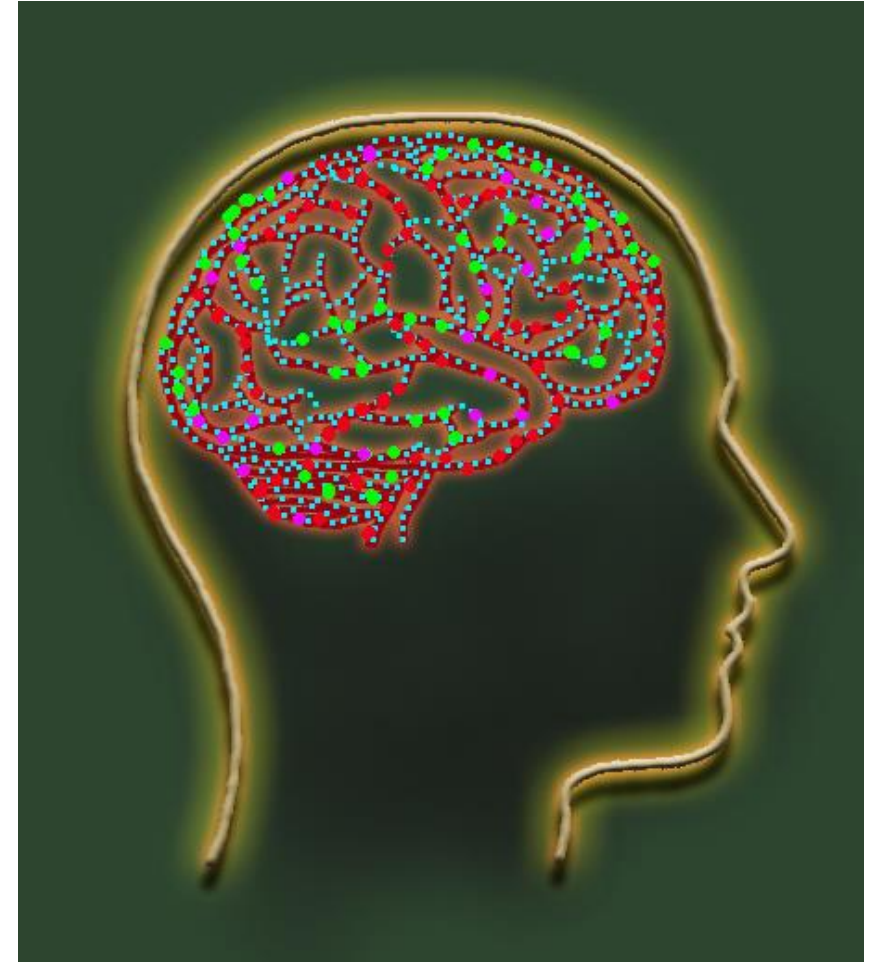
---

Aura

---

Ictal

---



Credit: Martin Allison



# Seizure Phases

---

Aura

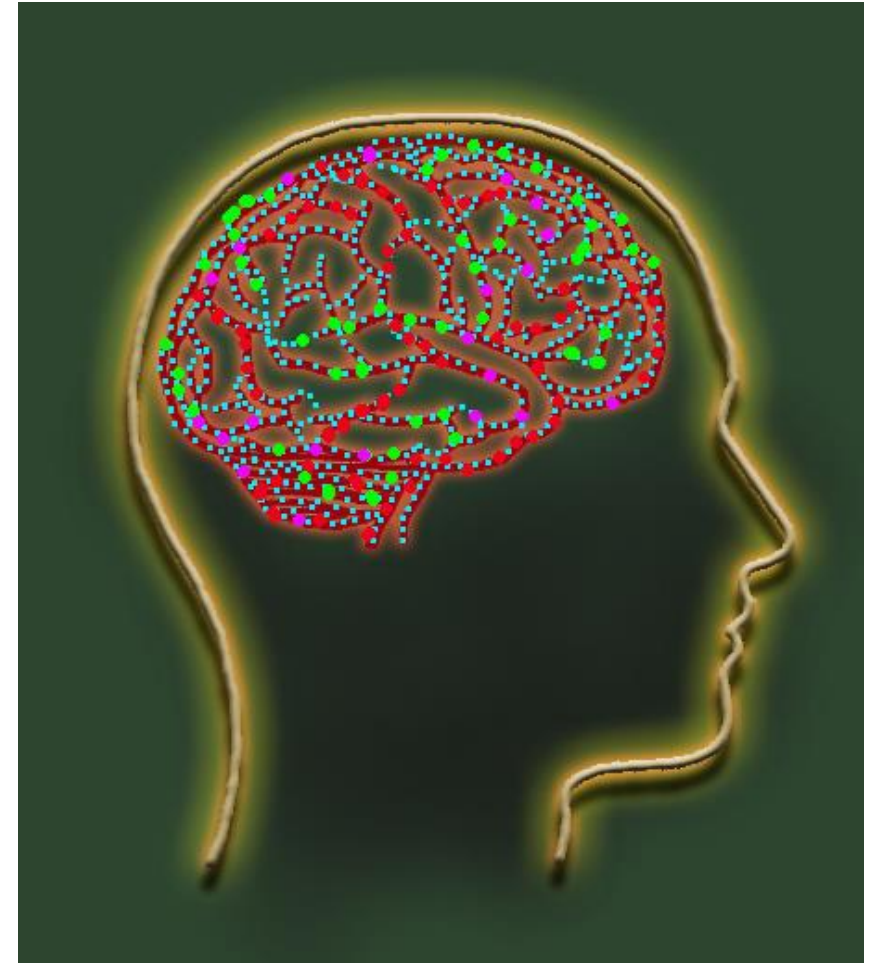
---

Ictal

---

Postictal

---



Credit: Martin Allison



# Seizure Phases

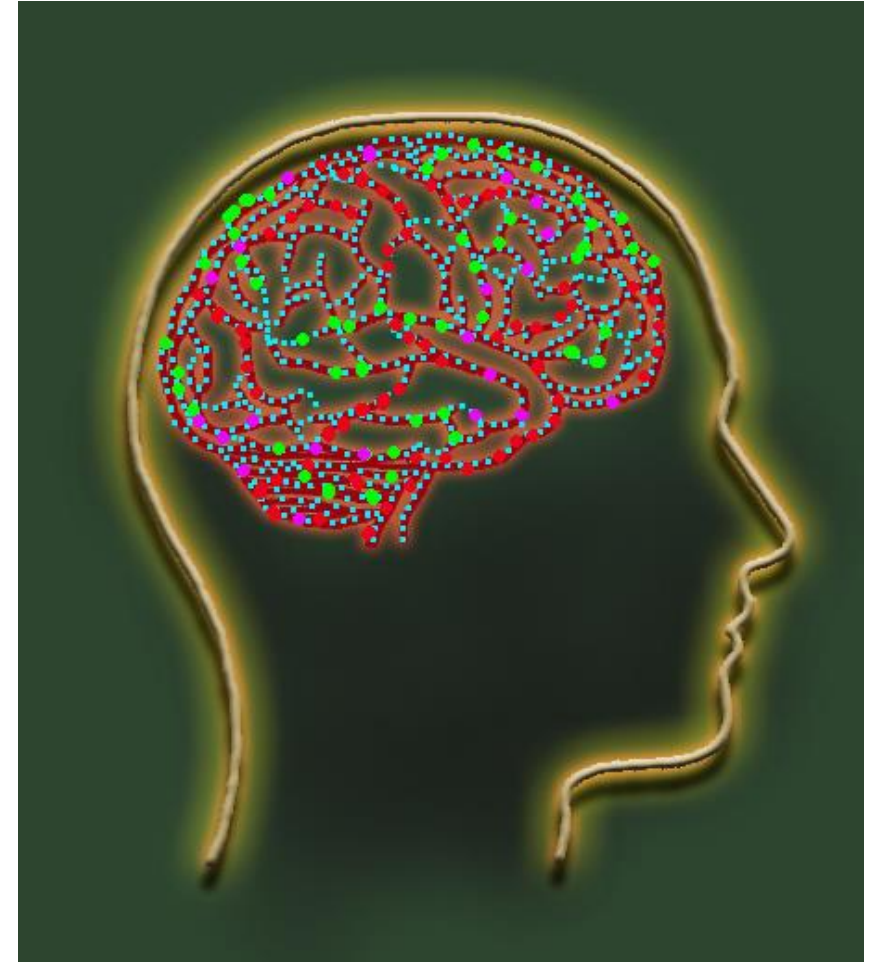
---

## Aura

- Strange sensations that can be a warning of impending seizure
- Often followed by a larger seizure event

## Ictal

## Postictal



Credit: Martin Allison



# Seizure Phases

---

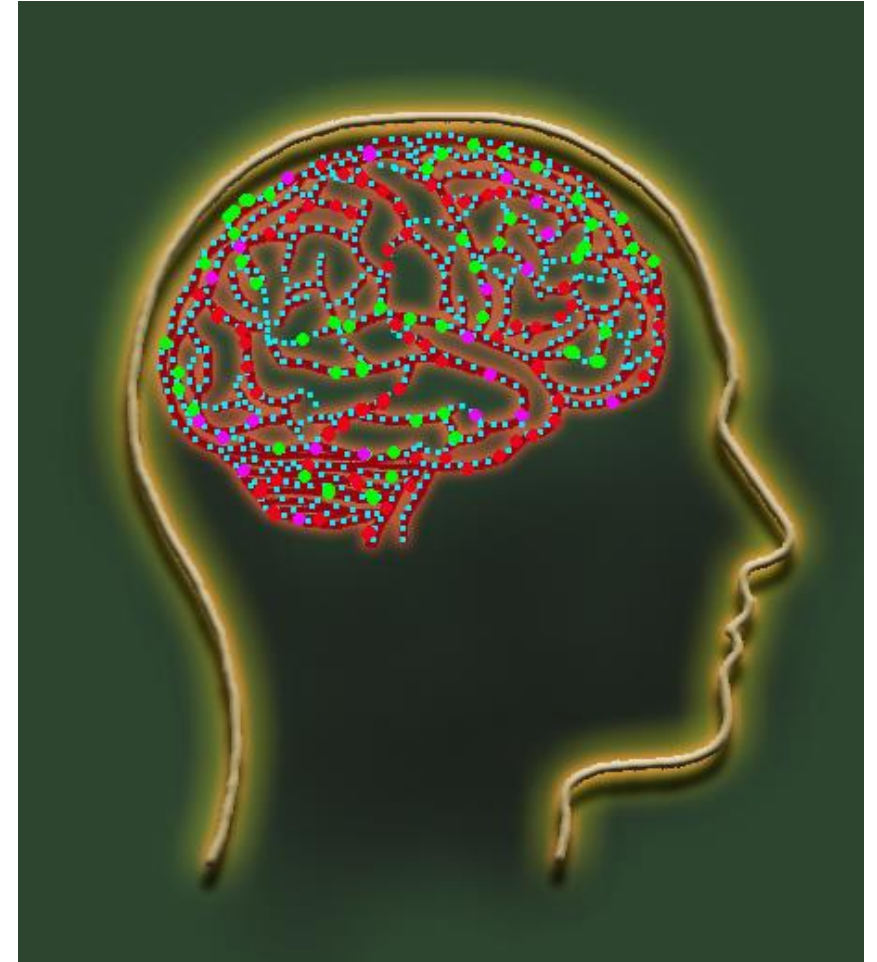
## Aura

- Strange sensations that can be a warning of impending seizure
- Often followed by a larger seizure event

## Ictal

- Actual seizure activity

## Postictal



Credit: Martin Allison





# Seizure Phases

---

## Aura

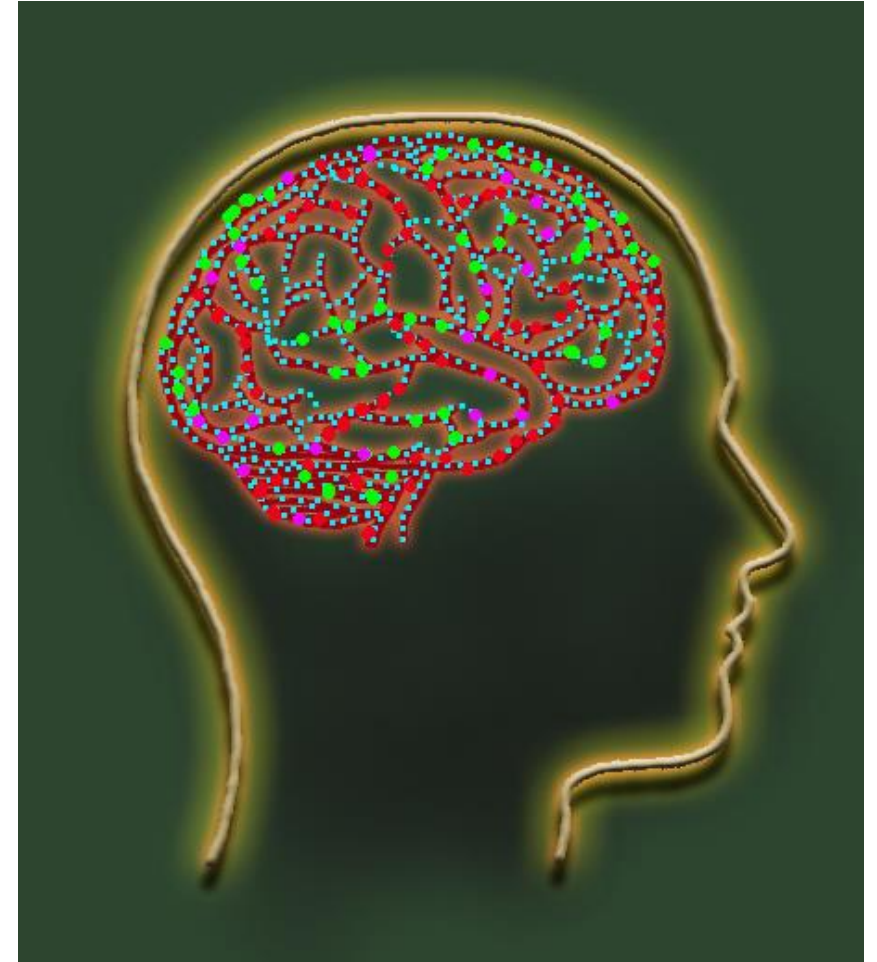
- Strange sensations that can be a warning of impending seizure
- Often followed by a larger seizure event

## Ictal

- Actual seizure activity

## Postictal

- Brain recovery period
- Drowsiness and confusion are common



Credit: Martin Allison





# Seizure Classifications

---



# Seizure Classifications

---

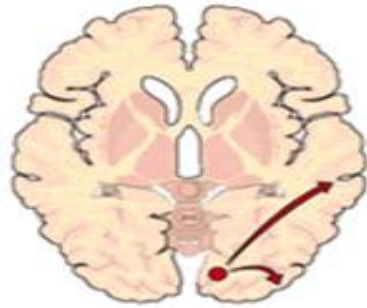
- Seizures are generally described in two major groups:



# Seizure Classifications

---

- Seizures are generally described in two major groups:

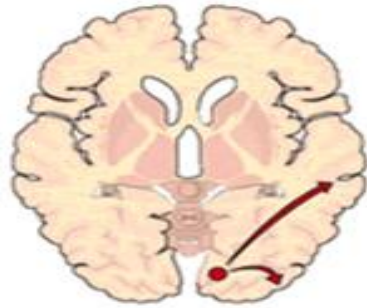


**Focal**  
*(also referred to as *Partial*)*

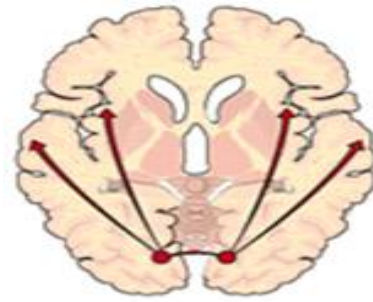
# Seizure Classifications

---

- Seizures are generally described in two major groups:



Focal  
*(also referred to as Partial)*



Generalized

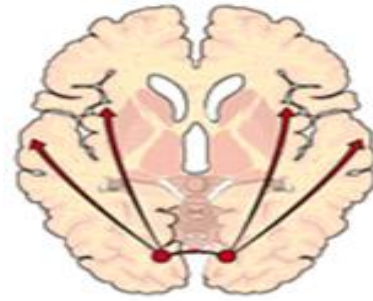
# Seizure Classifications

---

- Seizures are generally described in two major groups:



Focal  
*(also referred to as Partial)*



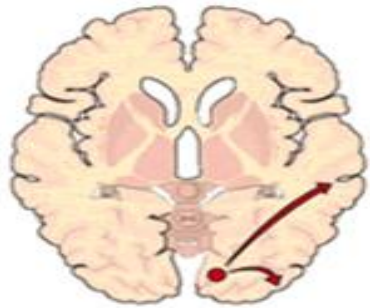
Generalized

- The difference in types of seizures is in how and where they begin in the brain

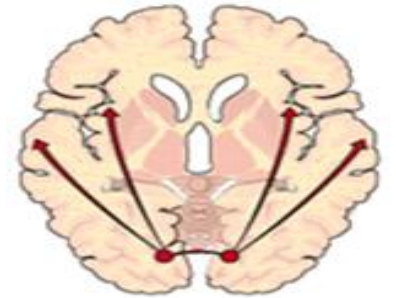
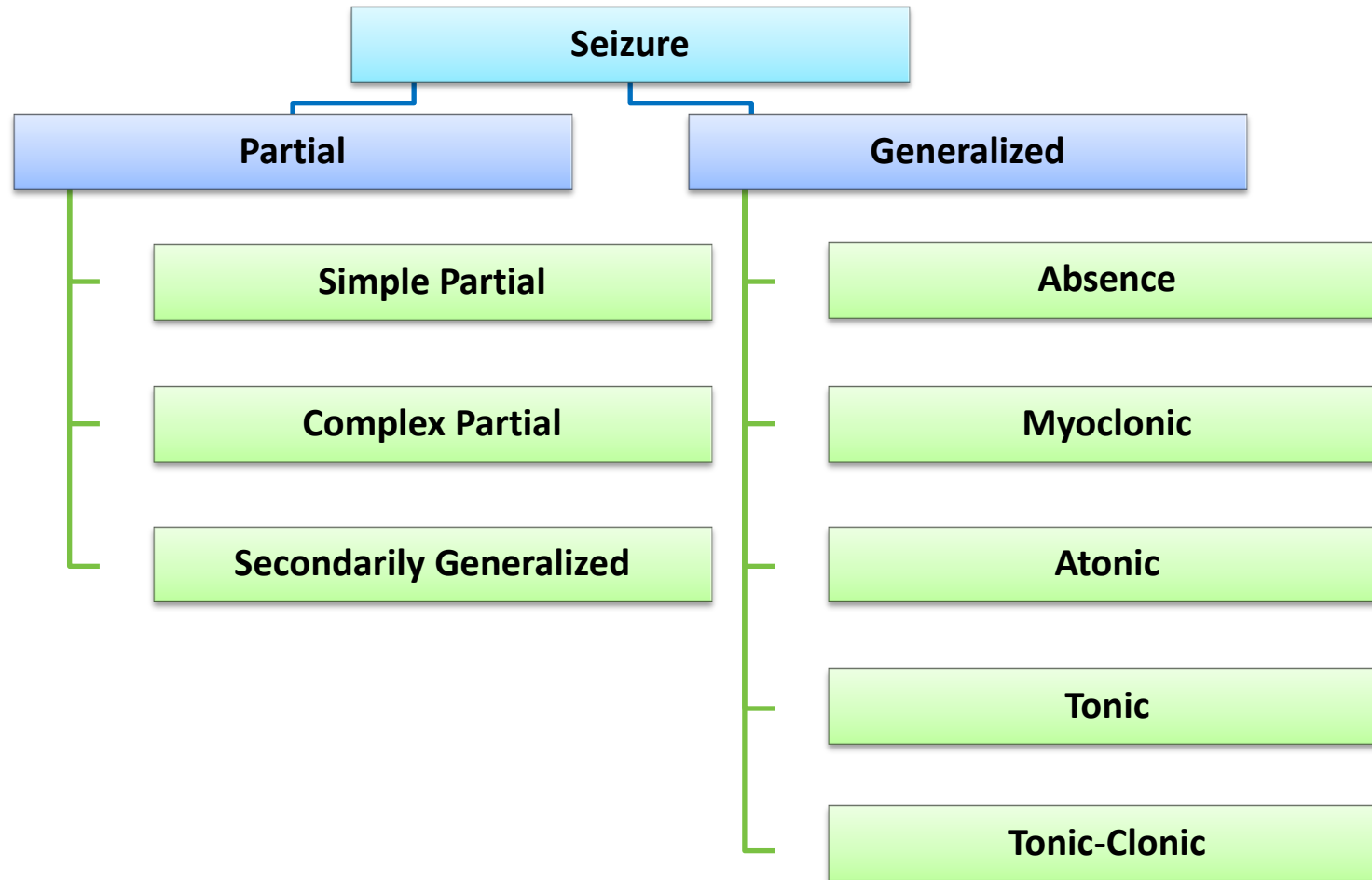


# Seizure Classifications

## ILAE Classification of Seizures Before 2017 Revision



Focal



Generalized





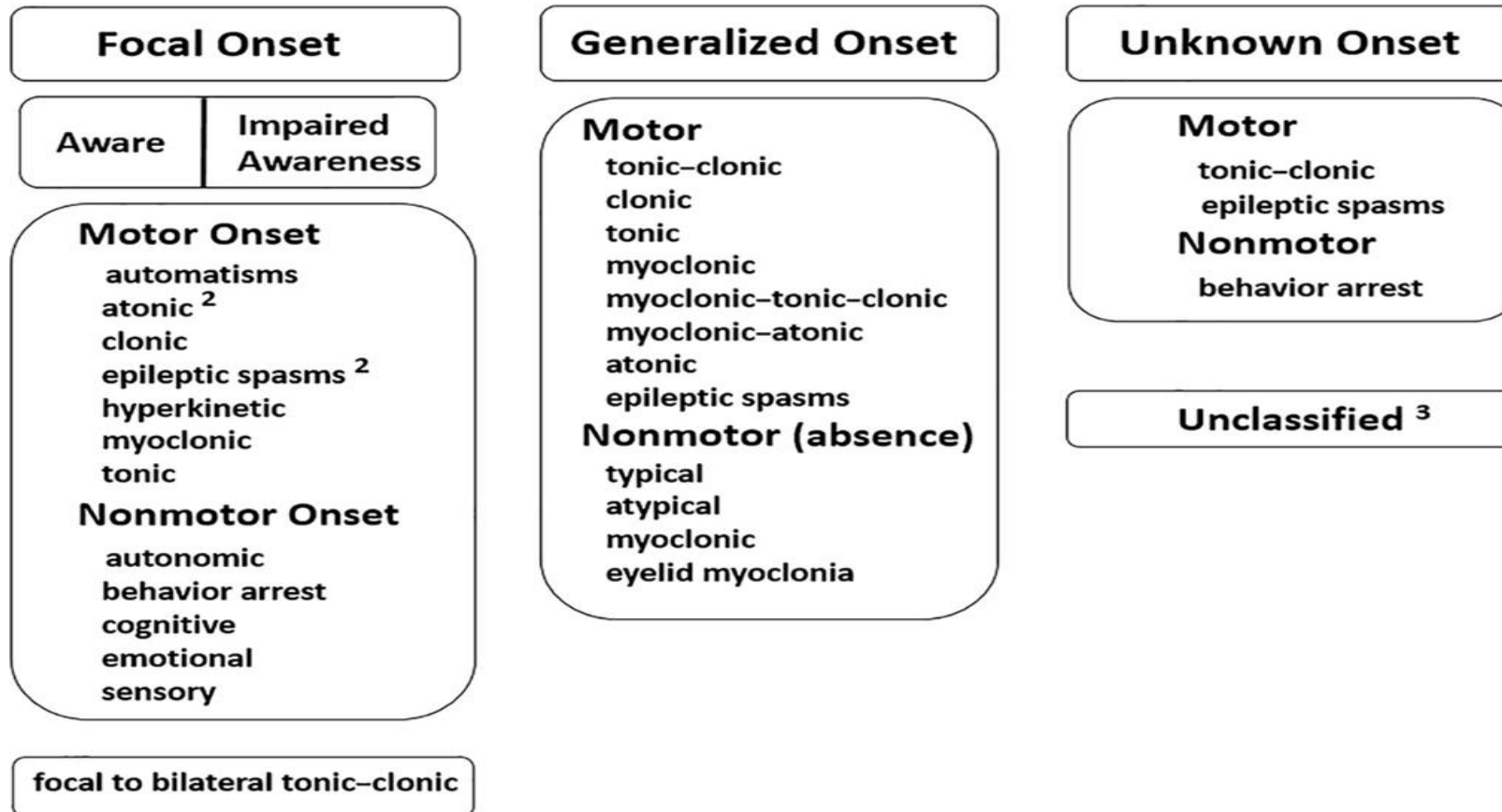
# ILAE 2017 Classification of Seizures

---



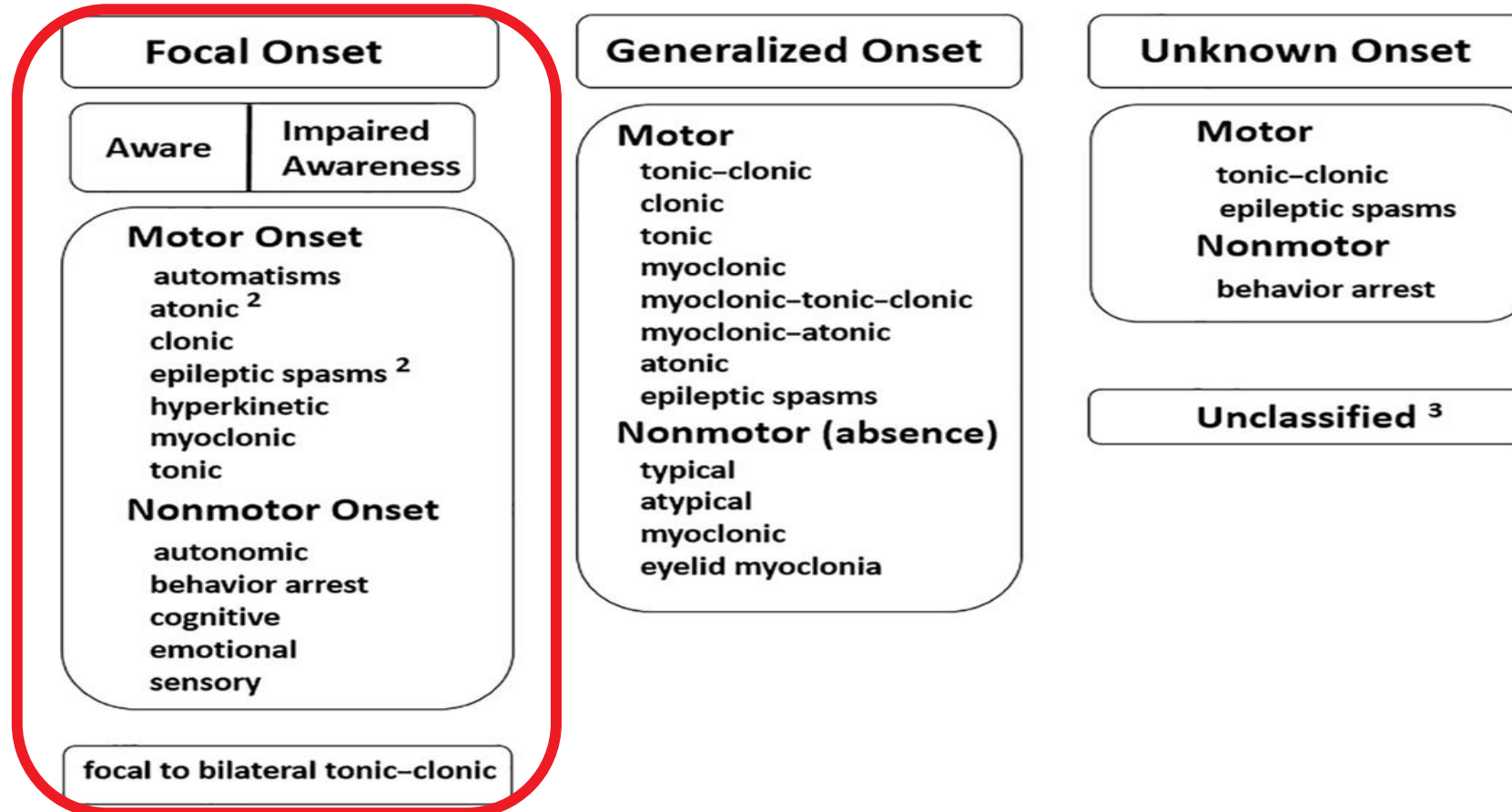
# ILAE 2017 Classification of Seizures

## ILAE Classification of Seizure Types Expanded Version <sup>1</sup>



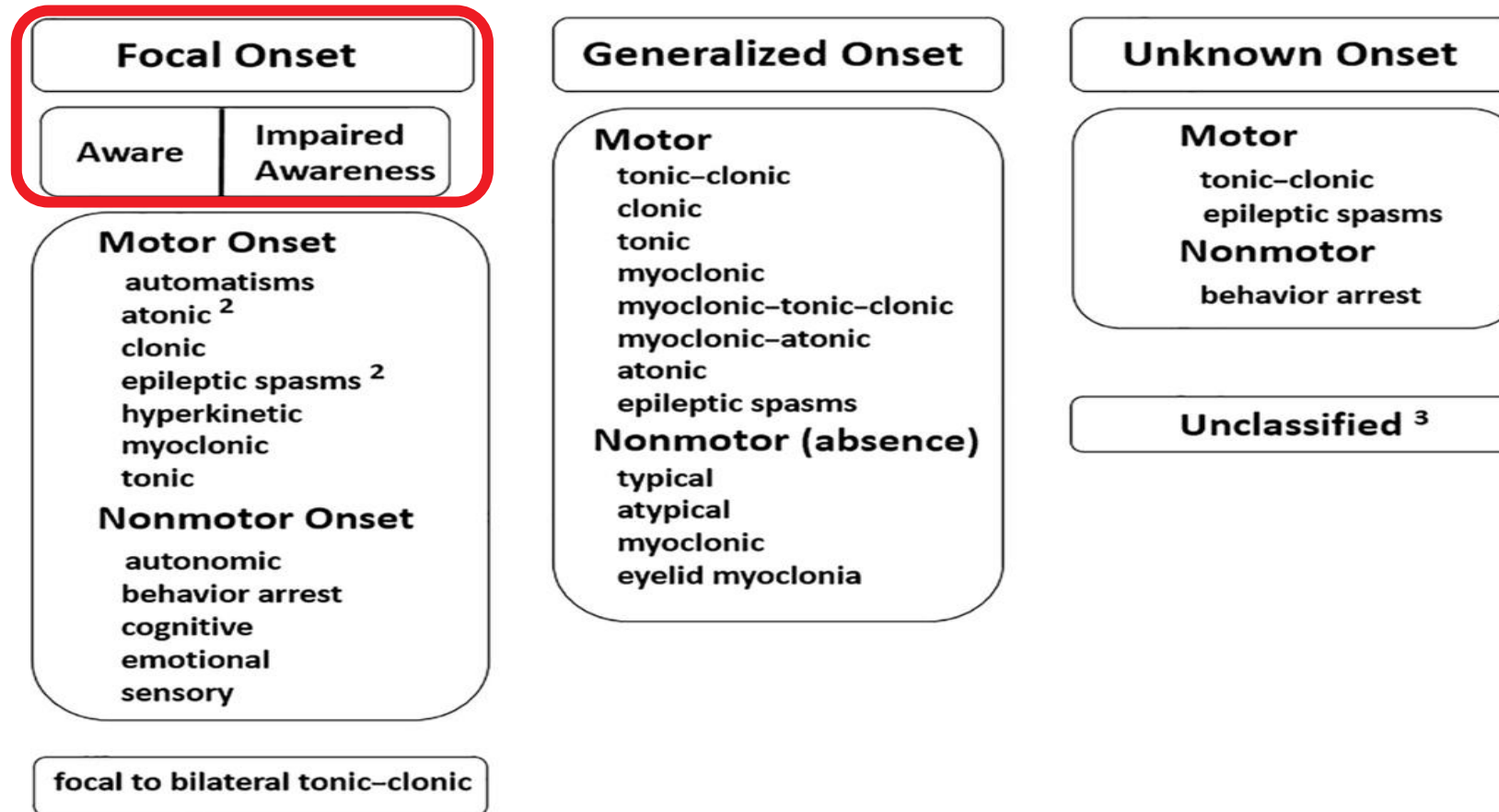
# ILAE 2017 Classification of Seizures

## ILAE Classification of Seizure Types Expanded Version <sup>1</sup>



# ILAE 2017 Classification of Seizures

## ILAE Classification of Seizure Types Expanded Version <sup>1</sup>



# Focal Onset Seizures

---



# Focal Onset Seizures

---

**Simple Partial**



**Complex Partial**



**Secondarily Generalized  
Tonic-Clonic**



# Focal Onset Seizures

---

**Simple Partial**



## **Focal Aware**

- Localized to one area of the brain without loss of consciousness
- Last < 1 minute

**Complex Partial**



**Secondarily Generalized  
Tonic-Clonic**





# Focal Onset Seizures

---

**Simple Partial**



**Focal Aware**

- Localized to one area of the brain without loss of consciousness
- Last < 1 minute

**Complex Partial**



**Focal Impaired Awareness**

- Consciousness is altered; ability to pay attention or respond is impaired or lost
- Postictal confusion is common

**Secondarily Generalized  
Tonic-Clonic**



# Focal Onset Seizures

---

**Simple Partial**



**Focal Aware**

- Localized to one area of the brain without loss of consciousness
- Last < 1 minute

**Complex Partial**



**Focal Impaired Awareness**

- Consciousness is altered; ability to pay attention or respond is impaired or lost
- Postictal confusion is common

**Secondarily Generalized  
Tonic-Clonic**



**Focal to Bilateral Tonic-Clonic**

- Begins as focal and becomes generalized



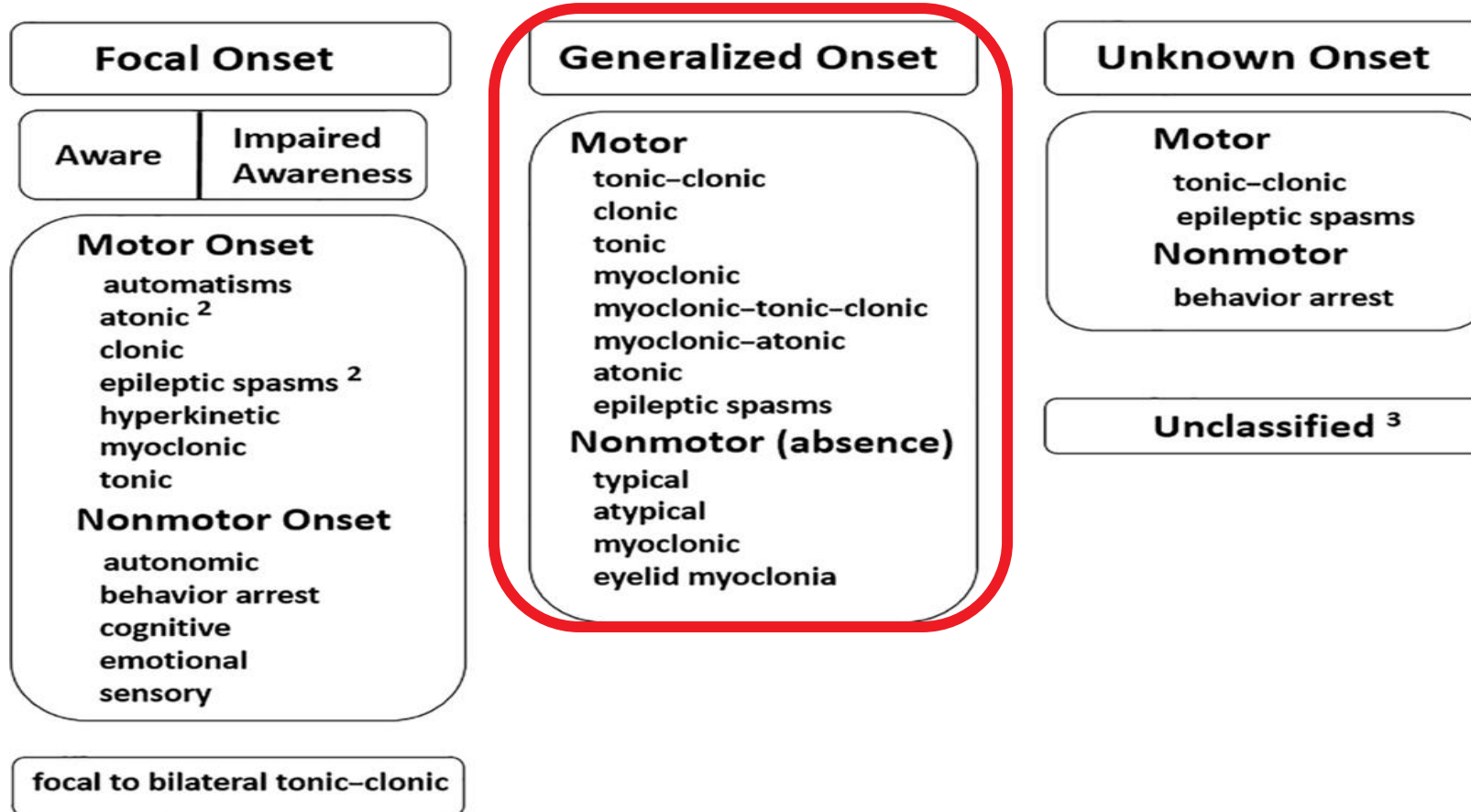
# Generalized Onset Seizures

---



# ILAE 2017 Classification of Seizures

## ILAE Classification of Seizure Types Expanded Version <sup>1</sup>



# Generalized Onset Seizures

Motor



Credit: Martin Allison



# Generalized Onset Seizures

---

Motor

---

Non-motor (Absence)

---



Credit: Martin Allison



# Generalized Onset Seizures

## Motor

- Tonic-clonic
- Clonic
- Tonic
- Myoclonic
- Myoclonic-tonic-clonic
- Myoclonic-atonic
- Atonic
- Epileptic spasms

## Non-motor (Absence)



Credit: Martin Allison





# Generalized Onset Seizures

## Motor

- Tonic-clonic
- Clonic
- Tonic
- Myoclonic
- Myoclonic-tonic-clonic
- Myoclonic-atonic
- Atonic
- Epileptic spasms

## Non-motor (Absence)

- Typical
- Atypical
- Myoclonic
- Absence with eyelid Myoclonia



Credit: Martin Allison



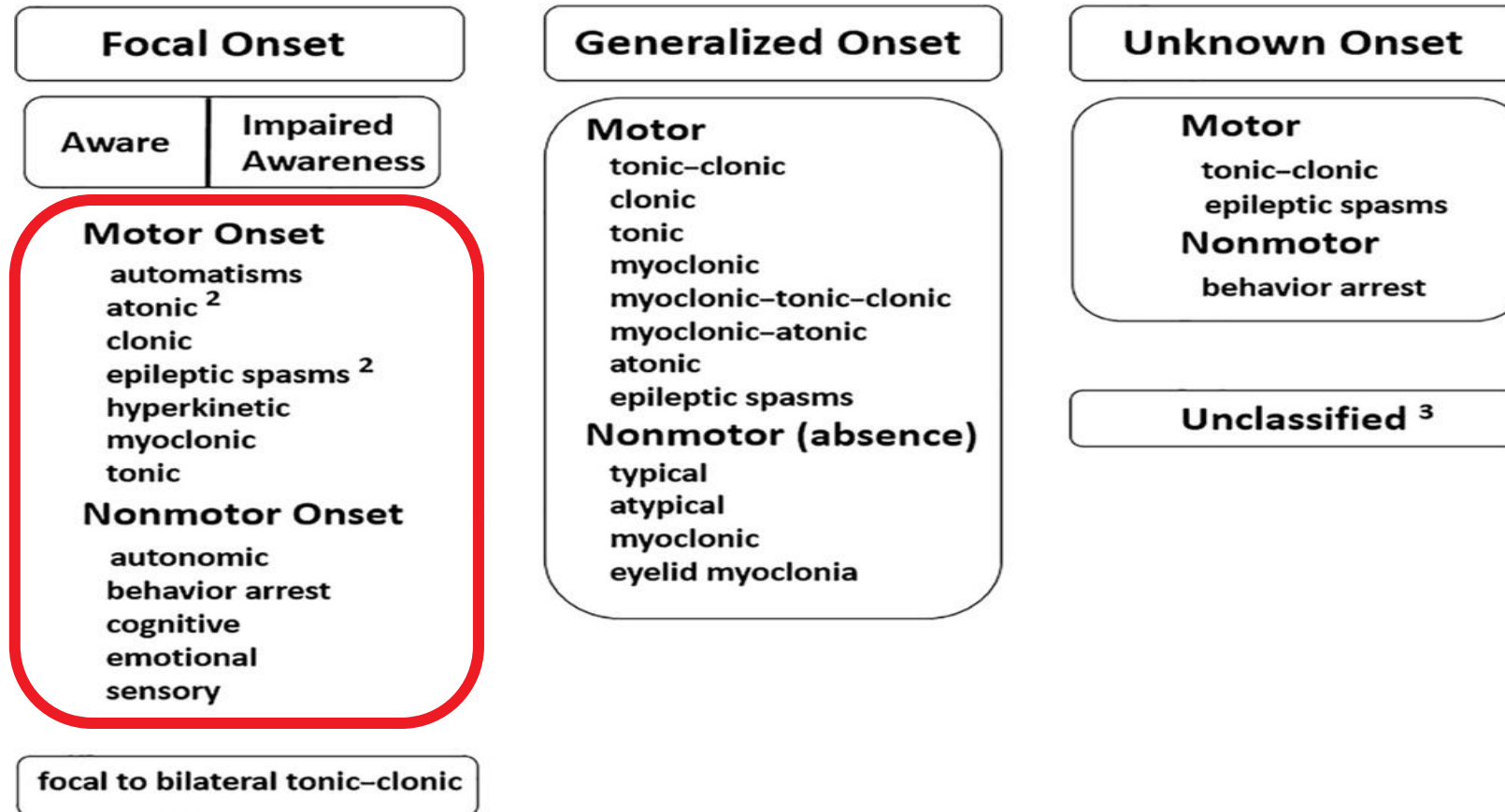
# Focal Motor Onset Seizures

---



# ILAE 2017 Classification of Seizures

## ILAE Classification of Seizure Types Expanded Version <sup>1</sup>



# Focal Motor Onset Seizures

---

- Atonic\*
  - Loss of tone

\* Can be Focal or Generalized



Credit: Martin Allison



# Focal Motor Onset Seizures

- Atonic\*
  - Loss of tone
- Tonic\*
  - Sustained muscle stiffening

\* Can be Focal or Generalized



Credit: Martin Allison



# Focal Motor Onset Seizures

- Atonic\*
  - Loss of tone
- Tonic\*
  - Sustained muscle stiffening
- Clonic\*
  - Focal rhythmic jerking

\* Can be Focal or Generalized



Credit: Martin Allison





# Focal Motor Onset Seizures

- Atonic\*
  - Loss of tone
- Tonic\*
  - Sustained muscle stiffening
- Clonic\*
  - Focal rhythmic jerking
- Myoclonic\*
  - Sudden, brief irregular focal muscle contractions

\* Can be Focal or Generalized



Credit: Martin Allison





# Focal Motor Onset Seizures

- Epileptic spasms\*
  - Focal flexion or extension of arms and flexion of trunk

\* Can be Focal or Generalized



Credit: Martin Allison



# Focal Motor Onset Seizures

- Epileptic spasms\*
  - Focal flexion or extension of arms and flexion of trunk
- Hyperkinetic
  - Pedaling, thrashing activity

\* Can be Focal or Generalized



Credit: Martin Allison



# Focal Motor Onset Seizures

- Epileptic spasms\*
  - Focal flexion or extension of arms and flexion of trunk
- Hyperkinetic
  - Pedaling, thrashing activity
- Automatism\*s
  - Uncoordinated, purposeless, repetitive motor activity
  - Also seen in generalized absence seizures

\* Can be Focal or Generalized



Credit: Martin Allison



# Focal Nonmotor Onset Seizures

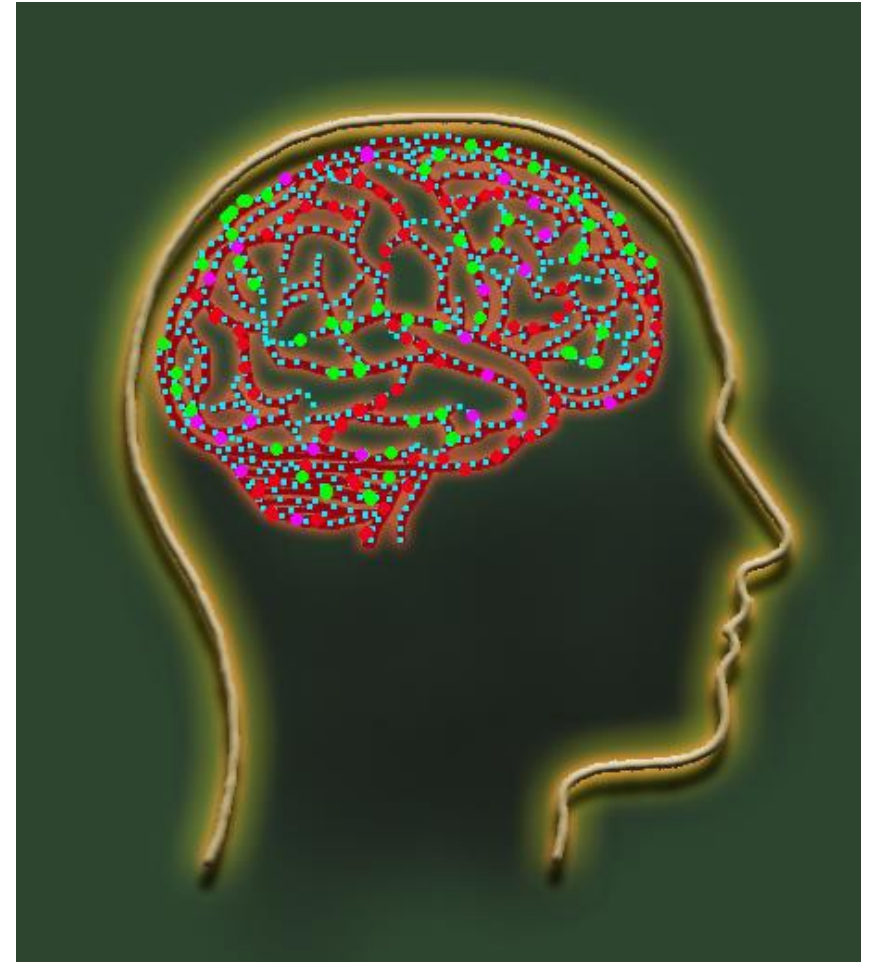
---



# Focal Nonmotor Onset Seizures

---

- Cognitive



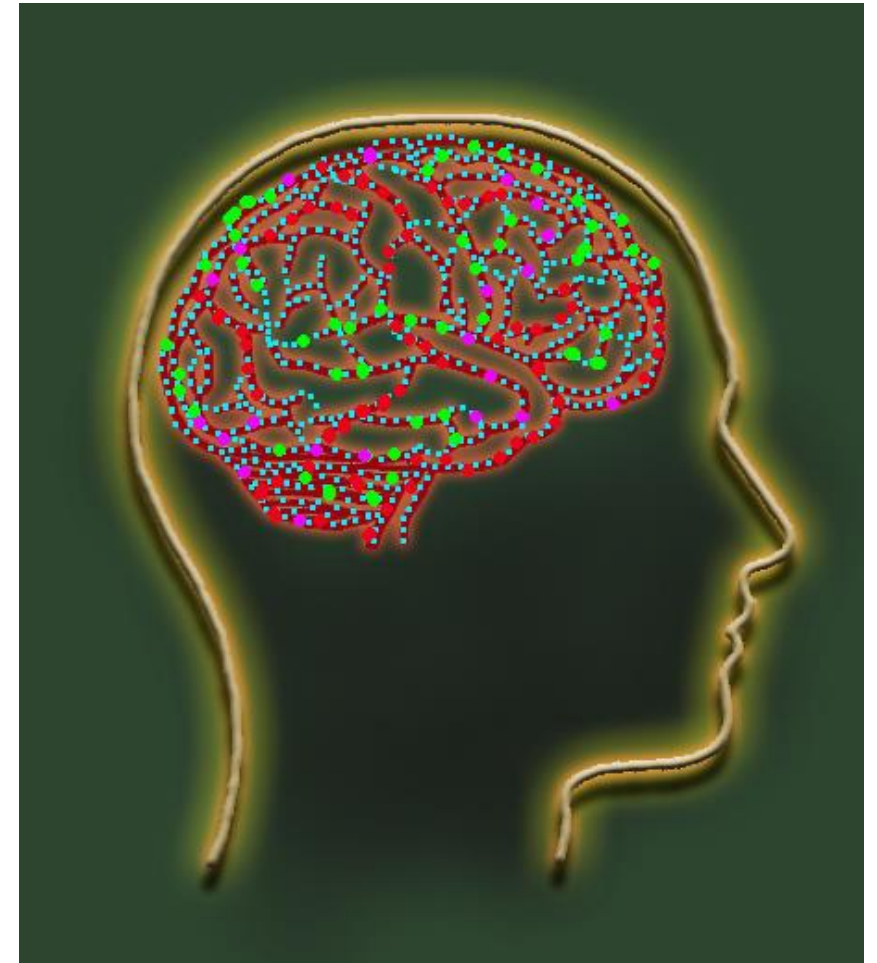
Credit: Martin Allison



# Focal Nonmotor Onset Seizures

---

- Cognitive
  - Impaired language
  - Déjà vu, hallucinations, illusions, or other perceptual distortions



Credit: Martin Allison

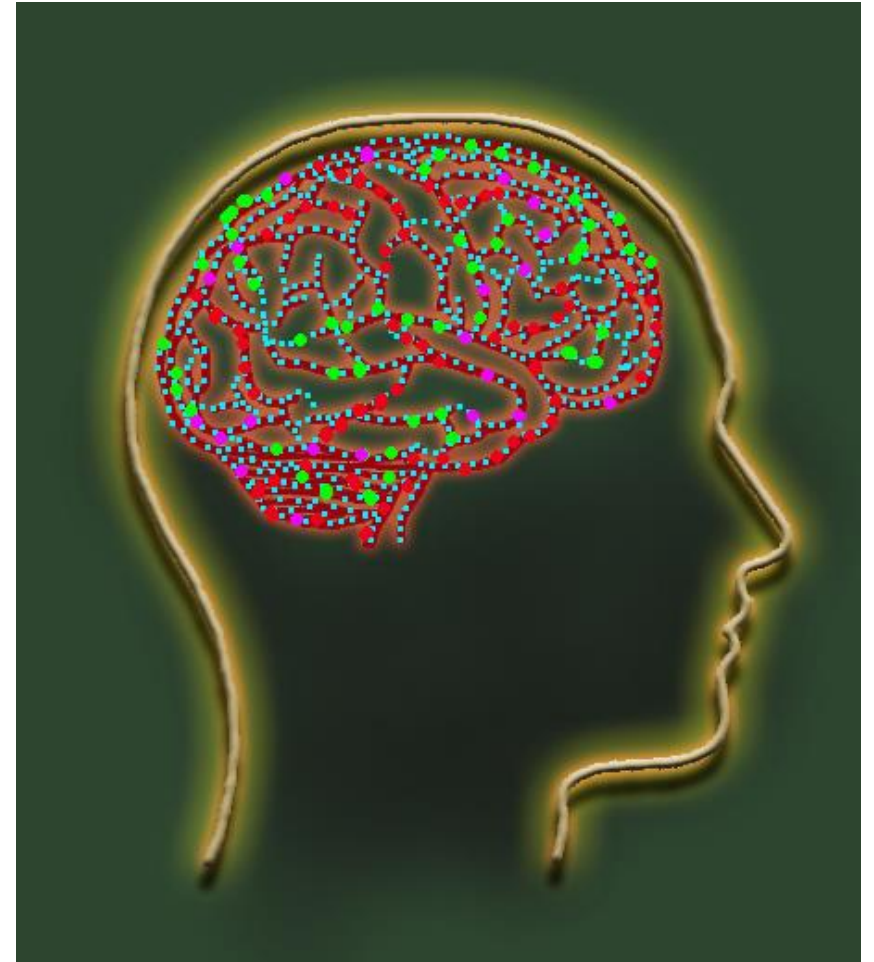




# Focal Nonmotor Onset Seizures

---

- Cognitive
  - Impaired language
  - Déjà vu, hallucinations, illusions, or other perceptual distortions
- Autonomic



Credit: Martin Allison

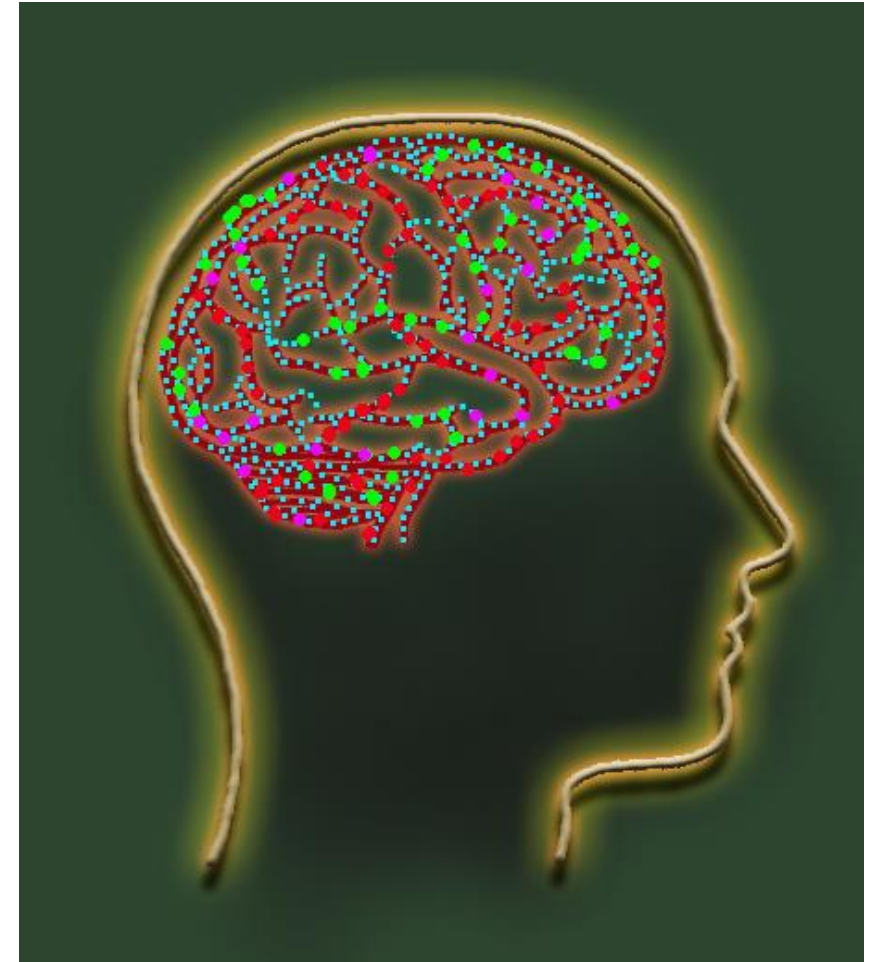




# Focal Nonmotor Onset Seizures

---

- Cognitive
  - Impaired language
  - Déjà vu, hallucinations, illusions, or other perceptual distortions
- Autonomic
  - Gastrointestinal sensations
  - Sense of heat or cold, flushing, goosebumps
  - Palpitations, respiratory changes



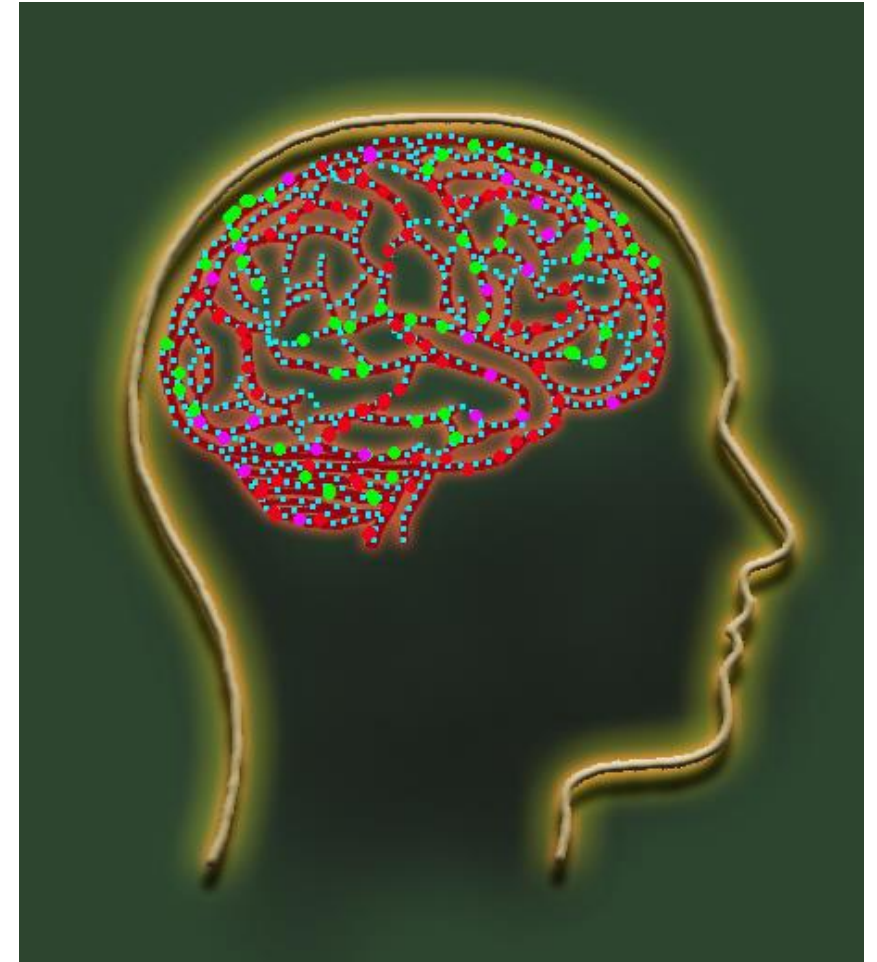
Credit: Martin Allison



# Focal Nonmotor Onset Seizures

---

- Cognitive
  - Impaired language
  - Déjà vu, hallucinations, illusions, or other perceptual distortions
- Autonomic
  - Gastrointestinal sensations
  - Sense of heat or cold, flushing, goosebumps
  - Palpitations, respiratory changes
- Emotional



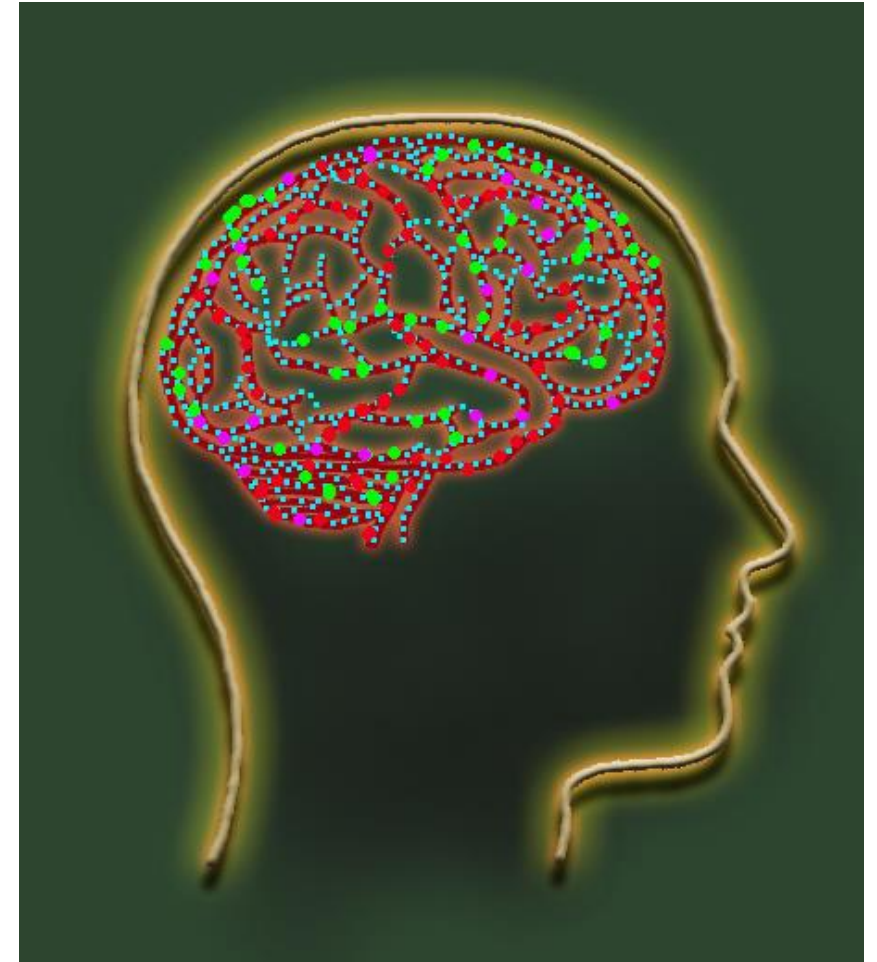
Credit: Martin Allison



# Focal Nonmotor Onset Seizures

---

- Cognitive
  - Impaired language
  - Déjà vu, hallucinations, illusions, or other perceptual distortions
- Autonomic
  - Gastrointestinal sensations
  - Sense of heat or cold, flushing, goosebumps
  - Palpitations, respiratory changes
- Emotional
  - Anxiety, fear, joy, or other emotions



Credit: Martin Allison



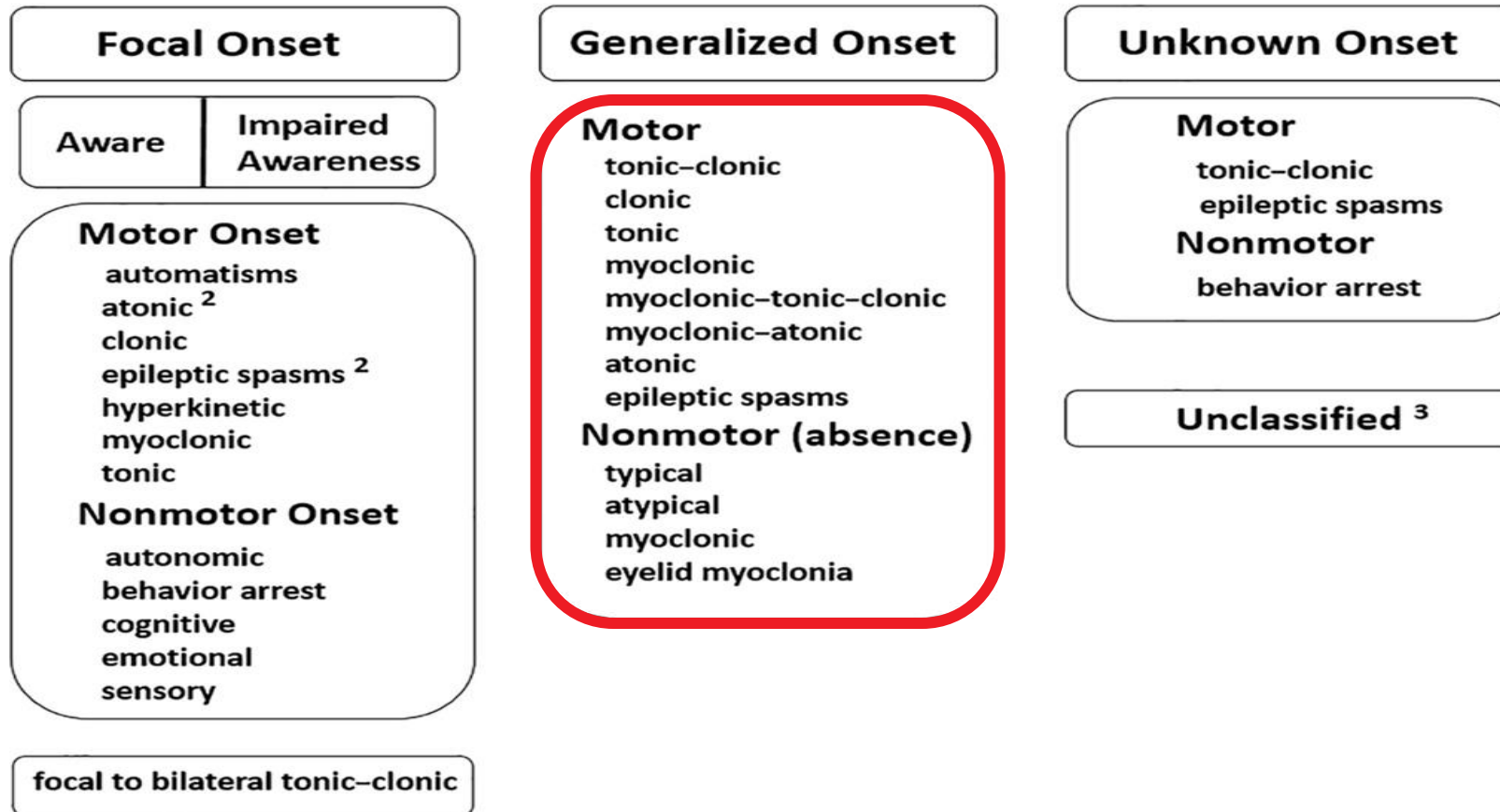
# Generalized Motor Onset Seizures

---



# ILAE 2017 Classification of Seizures

## ILAE Classification of Seizure Types Expanded Version <sup>1</sup>



# Generalized Motor Onset: Tonic-Clonic

---

- Most common and best known of generalized seizures



Credit: Martin Allison





# Generalized Motor Onset: Tonic-Clonic

---

- Most common and best known of generalized seizures
- Formerly called Grand Mal seizure



Credit: Martin Allison





# Generalized Motor Onset: Tonic-Clonic

---

- Most common and best known of generalized seizures
- Formerly called Grand Mal seizure
  - During tonic phase of seizure:



Credit: Martin Allison



# Generalized Motor Onset: Tonic-Clonic

---

- Most common and best known of generalized seizures
- Formerly called Grand Mal seizure
  - During tonic phase of seizure:
    - Sudden cry or groan
    - Loss of awareness
    - Muscle stiffening



Credit: Martin Allison



# Generalized Motor Onset: Tonic-Clonic

---

- Most common and best known of generalized seizures
- Formerly called Grand Mal seizure
  - During tonic phase of seizure:
    - Sudden cry or groan
    - Loss of awareness
    - Muscle stiffening
  - During clonic phase of seizure:



Credit: Martin Allison



# Generalized Motor Onset: Tonic-Clonic

- Most common and best known of generalized seizures
- Formerly called Grand Mal seizure
  - During tonic phase of seizure:
    - Sudden cry or groan
    - Loss of awareness
    - Muscle stiffening
  - During clonic phase of seizure:
    - Jerking and twitching of muscles in all four limbs
    - Shallow/irregular breathing, drooling or vomiting, skin color changes, and loss of bladder or bowel control



Credit: Martin Allison





# Generalized Motor Onset: Tonic-Clonic

- Most common and best known of generalized seizures
- Formerly called Grand Mal seizure
  - During tonic phase of seizure:
    - Sudden cry or groan
    - Loss of awareness
    - Muscle stiffening
  - During clonic phase of seizure:
    - Jerking and twitching of muscles in all four limbs
    - Shallow/irregular breathing, drooling or vomiting, skin color changes, and loss of bladder or bowel control
  - After seizure:



Credit: Martin Allison



# Generalized Motor Onset: Tonic-Clonic

- Most common and best known of generalized seizures
- Formerly called Grand Mal seizure
  - During tonic phase of seizure:
    - Sudden cry or groan
    - Loss of awareness
    - Muscle stiffening
  - During clonic phase of seizure:
    - Jerking and twitching of muscles in all four limbs
    - Shallow/irregular breathing, drooling or vomiting, skin color changes, and loss of bladder or bowel control
  - After seizure:
    - Confusion and fatigue



Credit: Martin Allison



# Generalized Motor Onset: Tonic-Atonic

---



Credit: Martin Allison





# Generalized Motor Onset: Tonic-Atonic

---

**Tonic seizures**



Credit: Martin Allison



# Generalized Motor Onset: Tonic-Atonic

---

## Tonic seizures

- Flexion at the waist and neck



Credit: Martin Allison



# Generalized Motor Onset: Tonic-Atonic

---

## Tonic seizures

- Flexion at the waist and neck
- Abduction and flexion or extension of the upper extremities



Credit: Martin Allison



# Generalized Motor Onset: Tonic-Atonic

---

## Tonic seizures

- Flexion at the waist and neck
- Abduction and flexion or extension of the upper extremities
- Flexion or extension of the lower extremities



Credit: Martin Allison



# Generalized Motor Onset: Tonic-Atonic

---

## Tonic seizures

- Flexion at the waist and neck
- Abduction and flexion or extension of the upper extremities
- Flexion or extension of the lower extremities
- Typically occur during sleep and last 2-20 seconds.



Credit: Martin Allison





# Generalized Motor Onset: Tonic-Atonic

---

## Tonic seizures

- Flexion at the waist and neck
- Abduction and flexion or extension of the upper extremities
- Flexion or extension of the lower extremities
- Typically occur during sleep and last 2-20 seconds.

## Atonic seizures



Credit: Martin Allison



# Generalized Motor Onset: Tonic-Atonic

---

## Tonic seizures

- Flexion at the waist and neck
- Abduction and flexion or extension of the upper extremities
- Flexion or extension of the lower extremities
- Typically occur during sleep and last 2-20 seconds.

## Atonic seizures

- Also known as drop seizures



Credit: Martin Allison





# Generalized Motor Onset: Tonic-Atonic

---

## Tonic seizures

- Flexion at the waist and neck
- Abduction and flexion or extension of the upper extremities
- Flexion or extension of the lower extremities
- Typically occur during sleep and last 2-20 seconds.

## Atonic seizures

- Also known as drop seizures
- Sudden loss of muscle tone, which can result in significant injuries due to sudden falls



Credit: Martin Allison



# Generalized Motor Onset: Tonic-Atonic

---

## Tonic seizures

- Flexion at the waist and neck
- Abduction and flexion or extension of the upper extremities
- Flexion or extension of the lower extremities
- Typically occur during sleep and last 2-20 seconds.

## Atonic seizures

- Also known as drop seizures
- Sudden loss of muscle tone, which can result in significant injuries due to sudden falls
- May manifest as a head nod or jaw drop



Credit: Martin Allison



# Generalized Motor Onset: Myoclonic

---



Credit: Martin Allison



# Generalized Motor Onset: Myoclonic

---

- Brief, shock-like jerk of a muscle or group of muscles



Credit: Martin Allison



# Generalized Motor Onset: Myoclonic

---

- Brief, shock-like jerk of a muscle or group of muscles
- Usually bilateral and affects the neck, shoulders, upper arms, body and upper legs



Credit: Martin Allison





# Generalized Motor Onset: Myoclonic

---

- Brief, shock-like jerk of a muscle or group of muscles
- Usually bilateral and affects the neck, shoulders, upper arms, body and upper legs
- Usually last less than a second



Credit: Martin Allison



# Generalized Motor Onset: Myoclonic

- Brief, shock-like jerk of a muscle or group of muscles
- Usually bilateral and affects the neck, shoulders, upper arms, body and upper legs
- Usually last less than a second
- If several occur in succession, may be termed a clonic seizure



Credit: Martin Allison





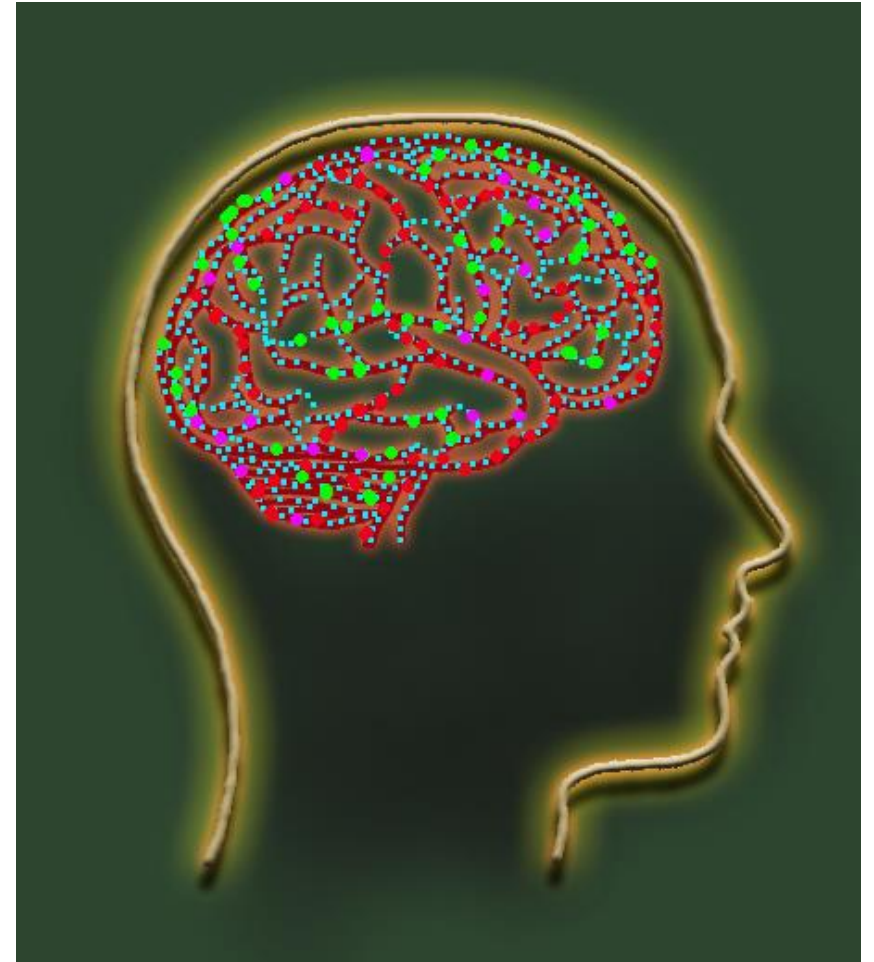
# Generalized Nonmotor Onset Seizures

---



# Generalized Nonmotor Onset: Absence

---



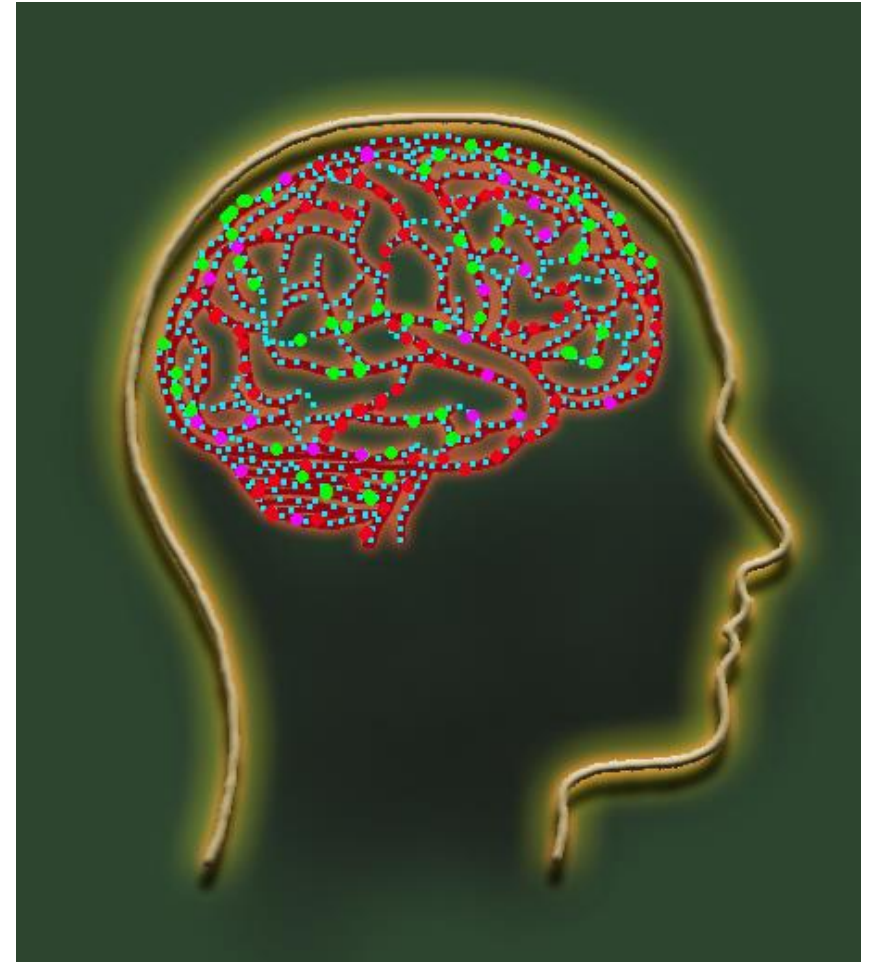
Credit: Martin Allison



# Generalized Nonmotor Onset: Absence

---

- Formerly referred to as Petit Mal



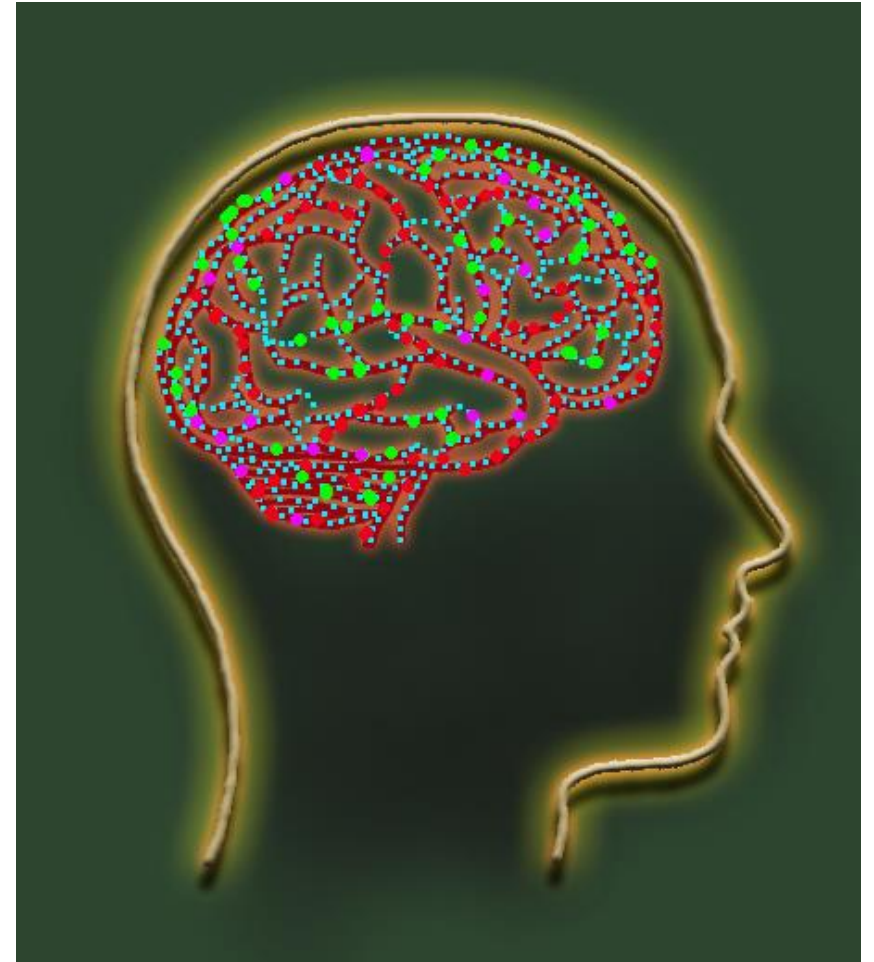
Credit: Martin Allison



# Generalized Nonmotor Onset: Absence

---

- Formerly referred to as Petit Mal
- Begin between ages 4-14 and resolve by age 18



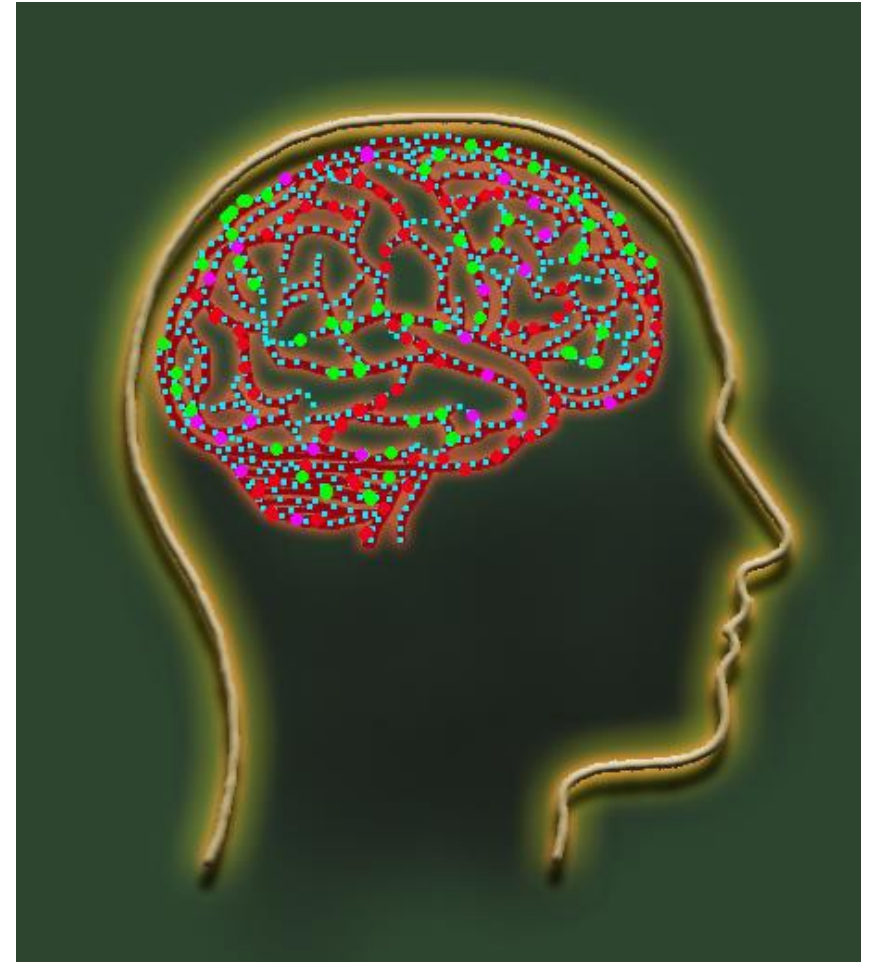
Credit: Martin Allison



# Generalized Nonmotor Onset: Absence

---

- Formerly referred to as Petit Mal
- Begin between ages 4-14 and resolve by age 18
- Provoked by hyperventilation



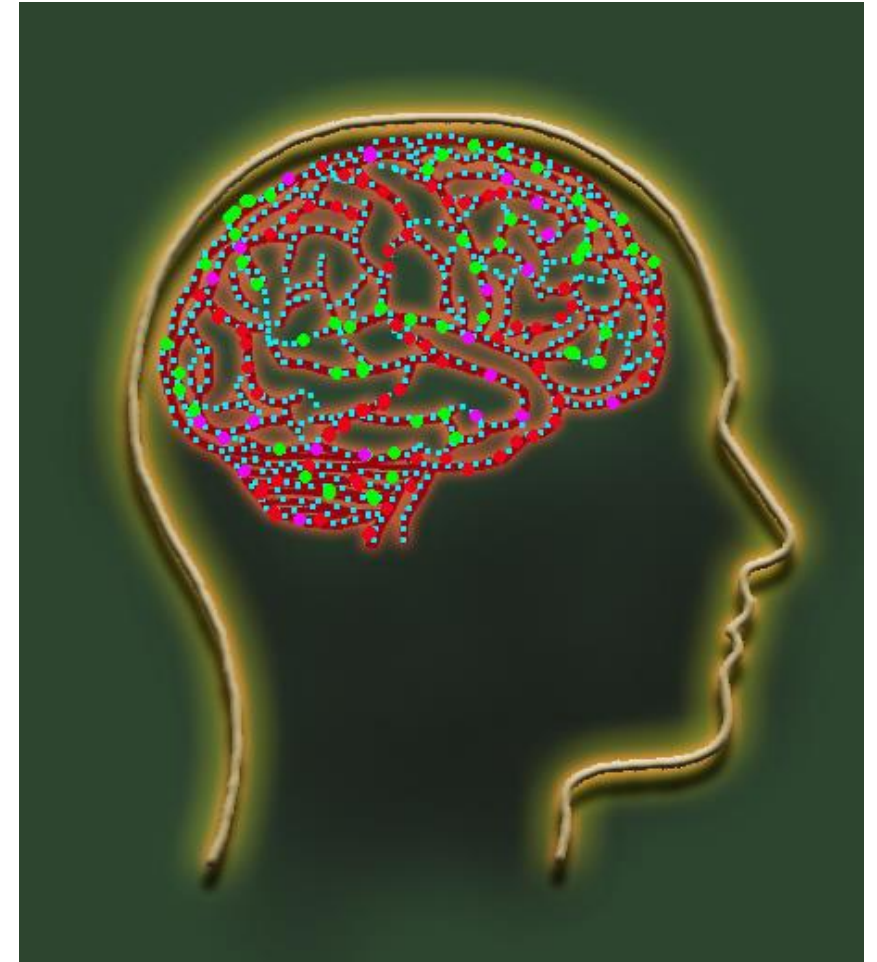
Credit: Martin Allison



# Generalized Nonmotor Onset: Absence

---

- Formerly referred to as Petit Mal
- Begin between ages 4-14 and resolve by age 18
- Provoked by hyperventilation
- Brief episodes of staring with impairment of awareness and responsiveness



Credit: Martin Allison

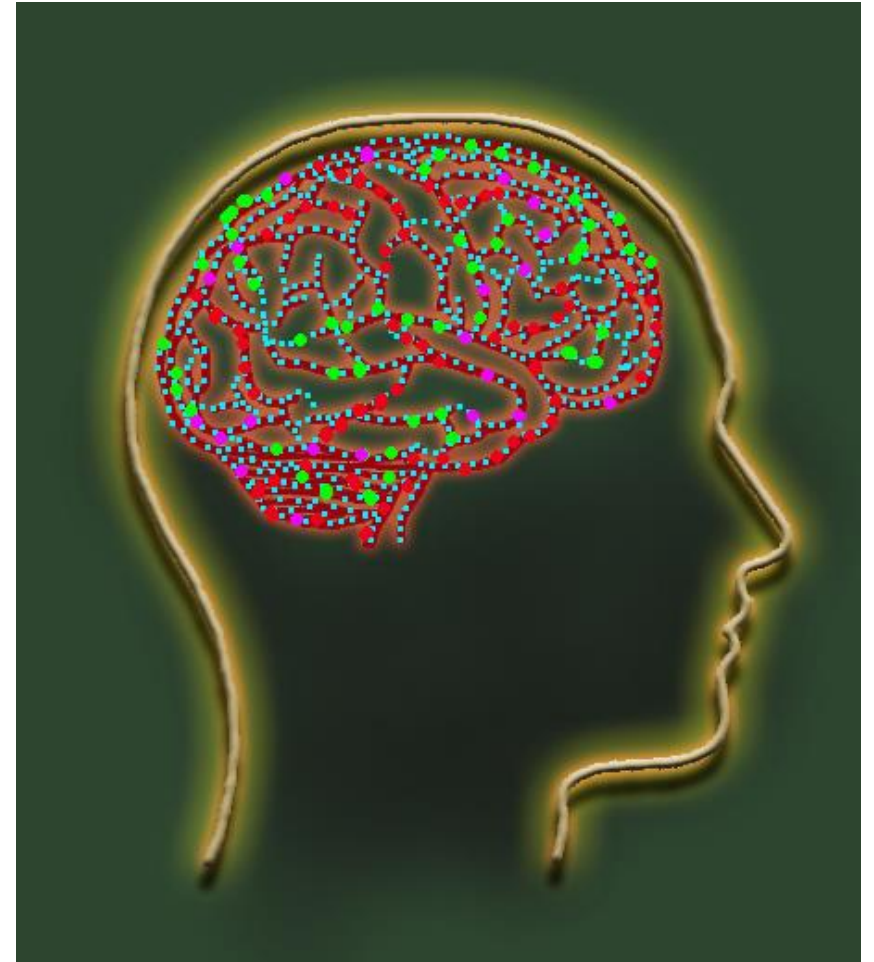




# Generalized Nonmotor Onset: Absence

---

- Formerly referred to as Petit Mal
- Begin between ages 4-14 and resolve by age 18
- Provoked by hyperventilation
- Brief episodes of staring with impairment of awareness and responsiveness
- Usually last from 3-20 seconds



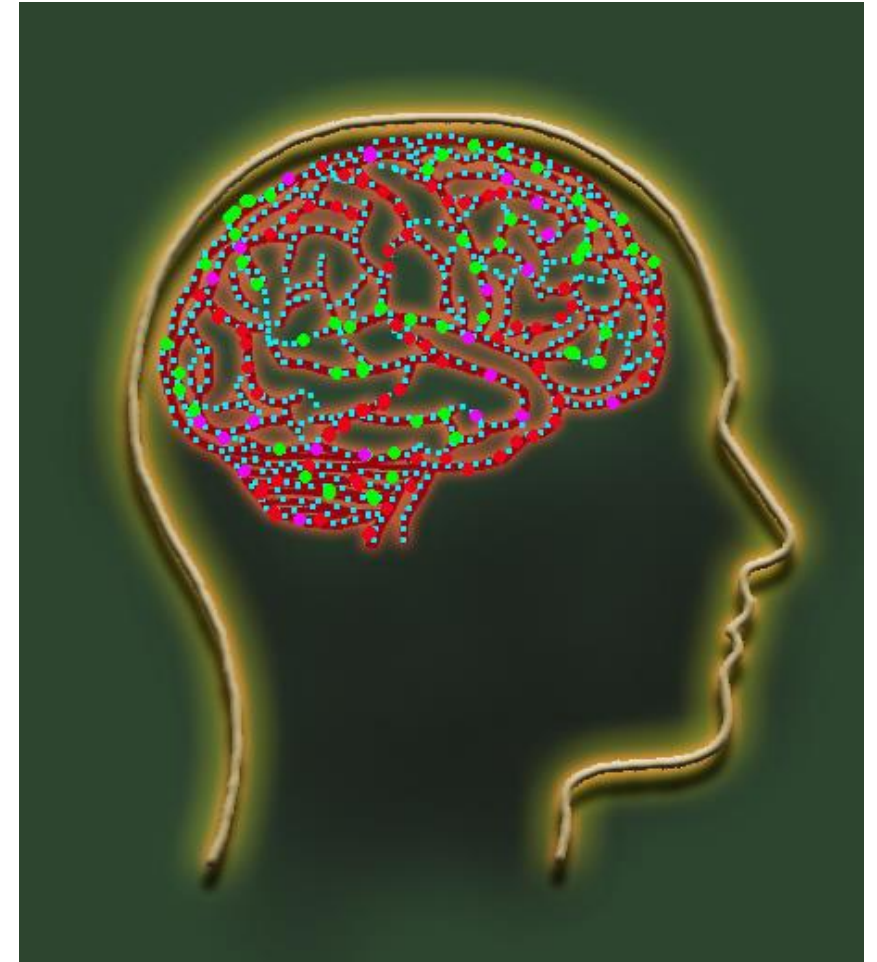
Credit: Martin Allison



# Generalized Nonmotor Onset: Absence

---

- Formerly referred to as Petit Mal
- Begin between ages 4-14 and resolve by age 18
- Provoked by hyperventilation
- Brief episodes of staring with impairment of awareness and responsiveness
- Usually last from 3-20 seconds
- No warning before seizure



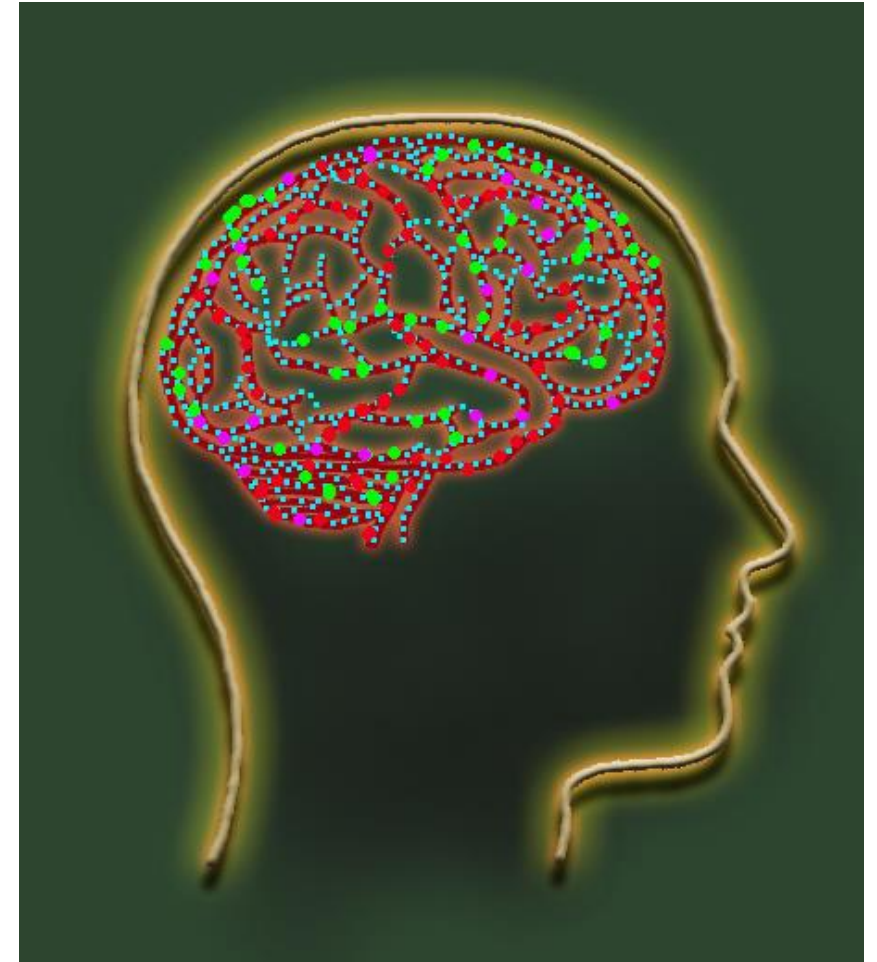
Credit: Martin Allison



# Generalized Nonmotor Onset: Absence

---

- Formerly referred to as Petit Mal
- Begin between ages 4-14 and resolve by age 18
- Provoked by hyperventilation
- Brief episodes of staring with impairment of awareness and responsiveness
- Usually last from 3-20 seconds
- No warning before seizure
- Individual is alert and attentive immediately after seizure

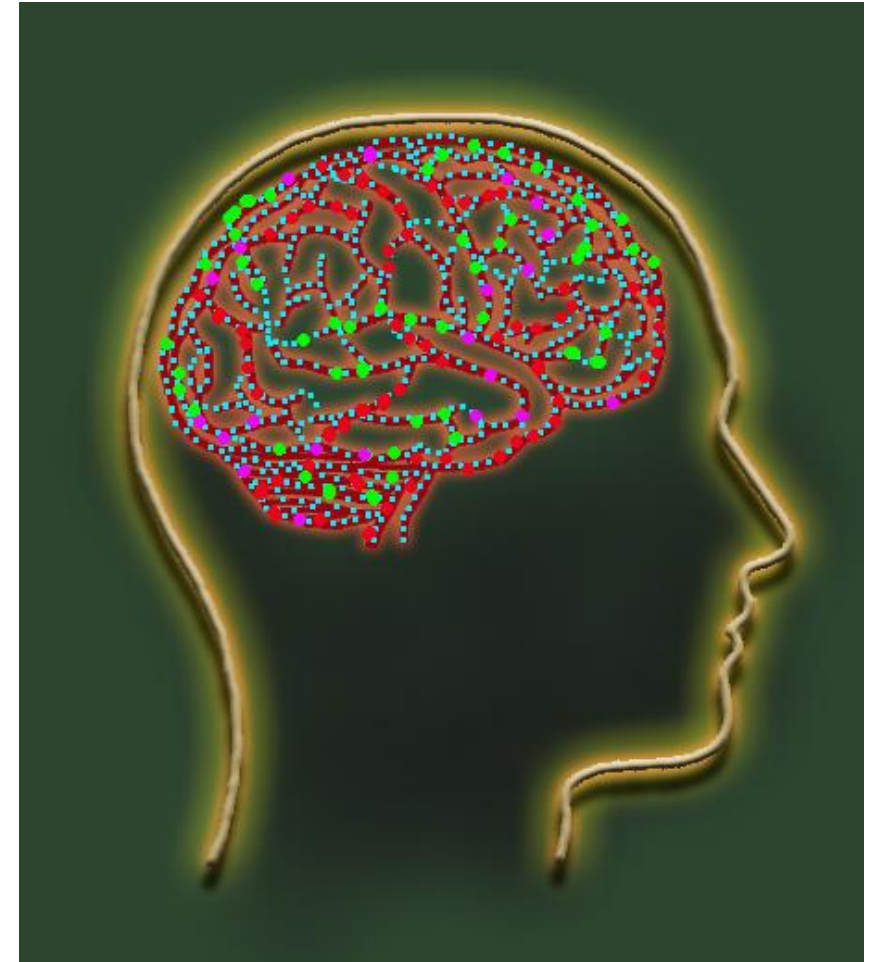


Credit: Martin Allison



# Generalized Nonmotor Onset: Absence

- Formerly referred to as Petit Mal
- Begin between ages 4-14 and resolve by age 18
- Provoked by hyperventilation
- Brief episodes of staring with impairment of awareness and responsiveness
- Usually last from 3-20 seconds
- No warning before seizure
- Individual is alert and attentive immediately after seizure
- Normal development and intelligence



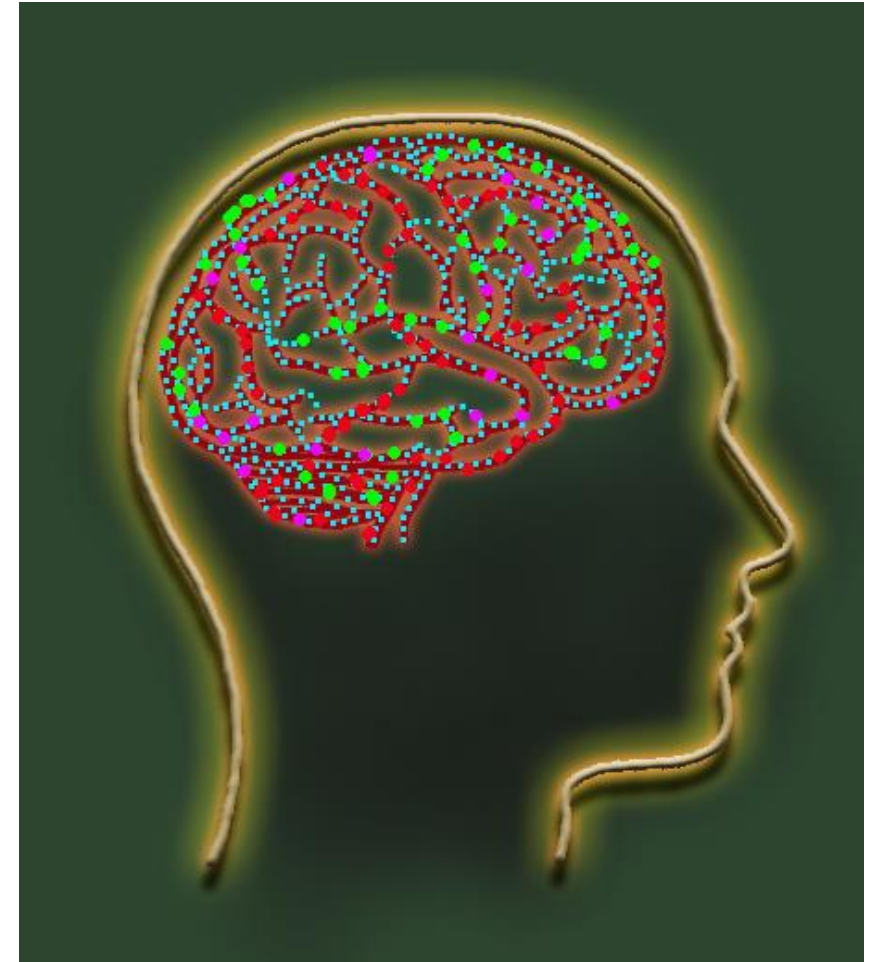
Credit: Martin Allison





# Generalized Nonmotor Onset: Absence

- Formerly referred to as Petit Mal
- Begin between ages 4-14 and resolve by age 18
- Provoked by hyperventilation
- Brief episodes of staring with impairment of awareness and responsiveness
- Usually last from 3-20 seconds
- No warning before seizure
- Individual is alert and attentive immediately after seizure
- Normal development and intelligence
- The lack of a postictal period is a key feature that allows one to distinguish between Absence and Focal Impaired Awareness seizures



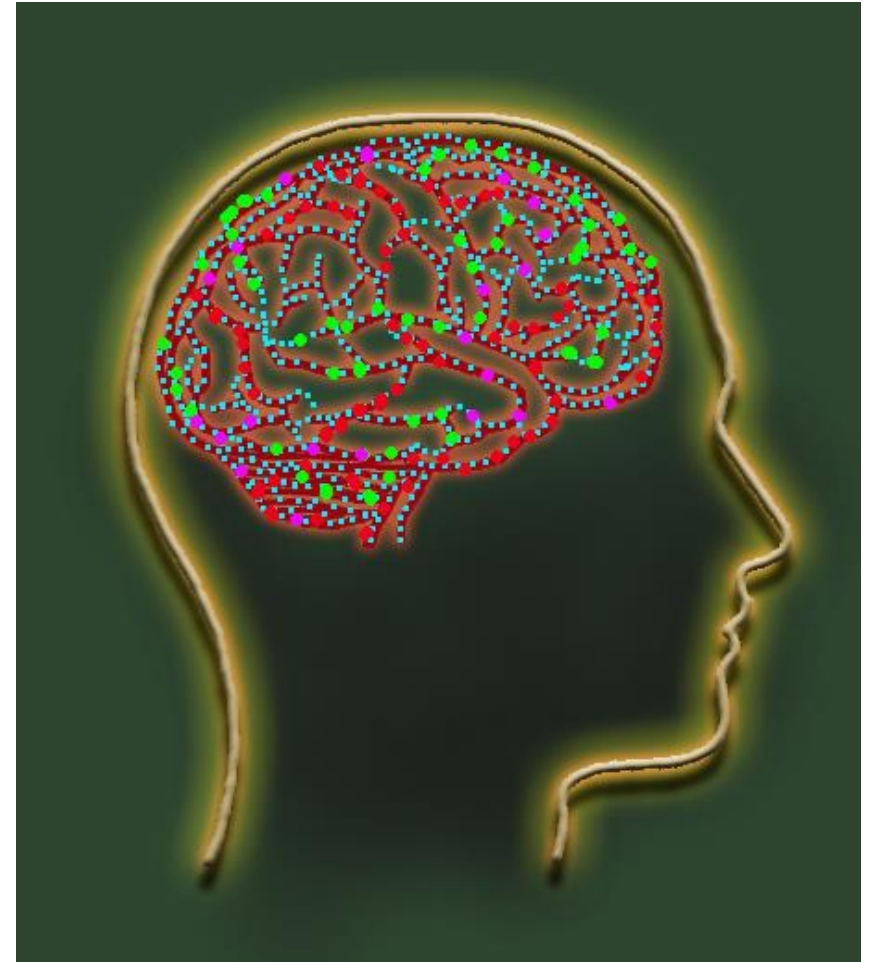
Credit: Martin Allison



# Generalized Nonmotor Onset: Absence

---

- May go undetected for an extended period of time



Credit: Martin Allison

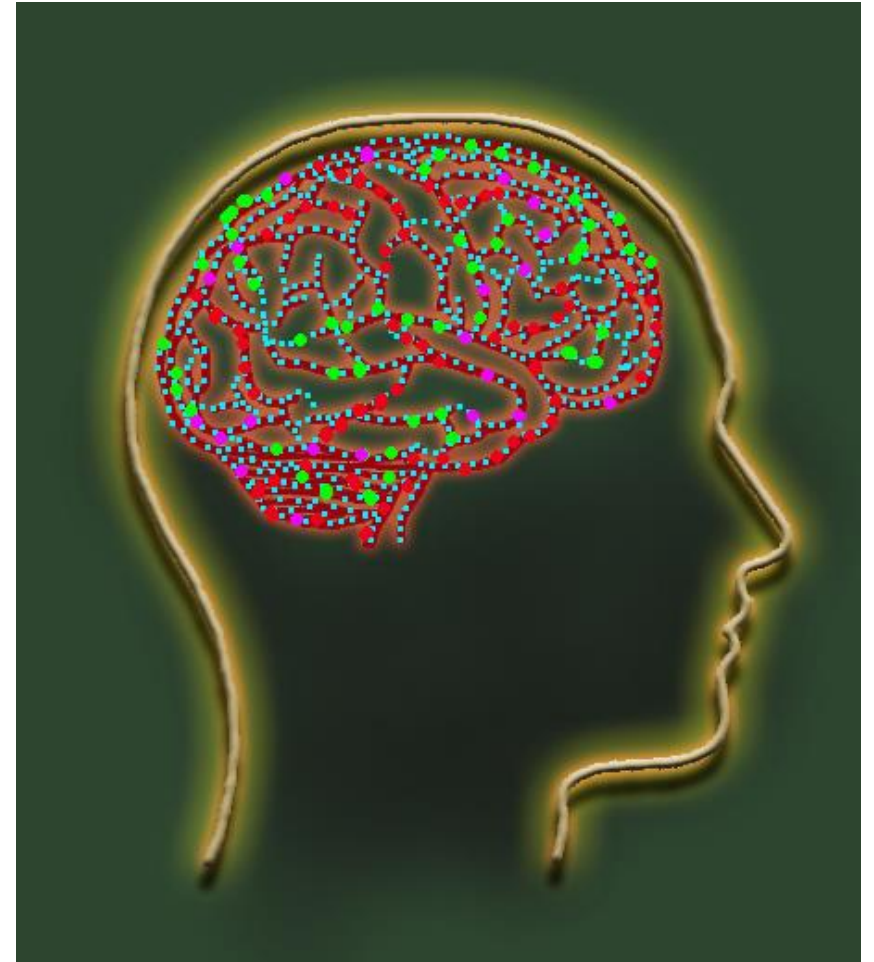




# Generalized Nonmotor Onset: Absence

---

- May go undetected for an extended period of time
  - May occur multiple times a day



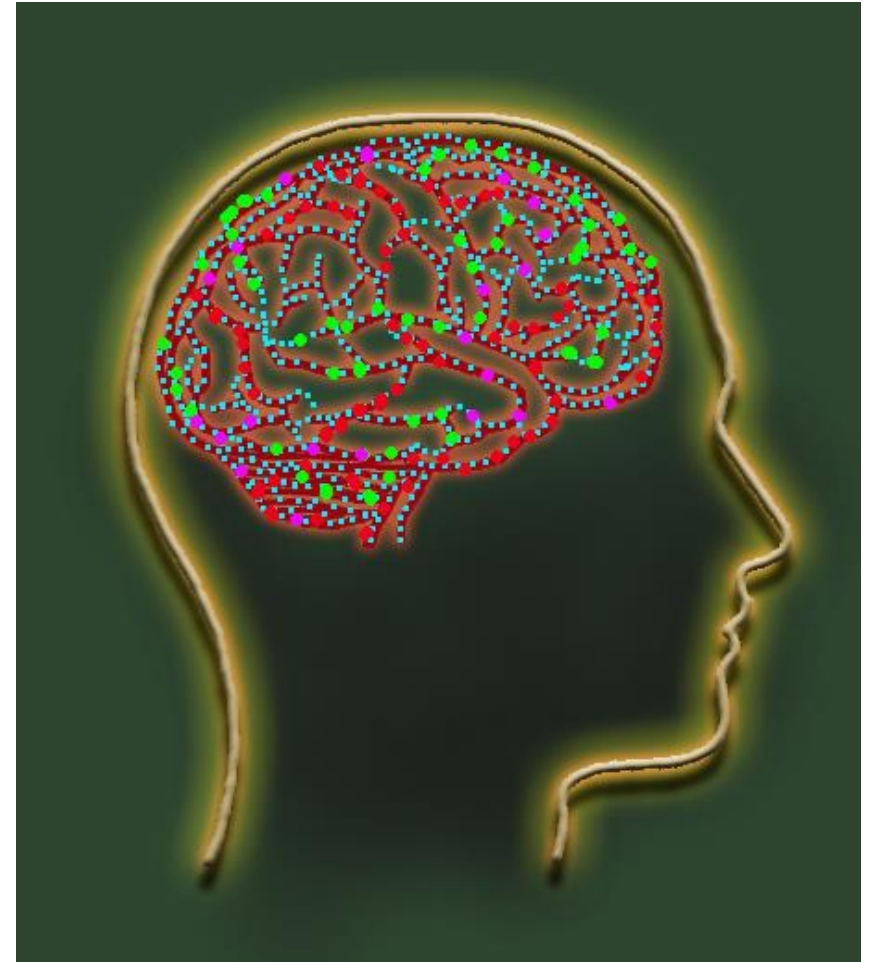
Credit: Martin Allison



# Generalized Nonmotor Onset: Absence

---

- May go undetected for an extended period of time
  - May occur multiple times a day
  - May be mistaken for ADD/ADHD in children



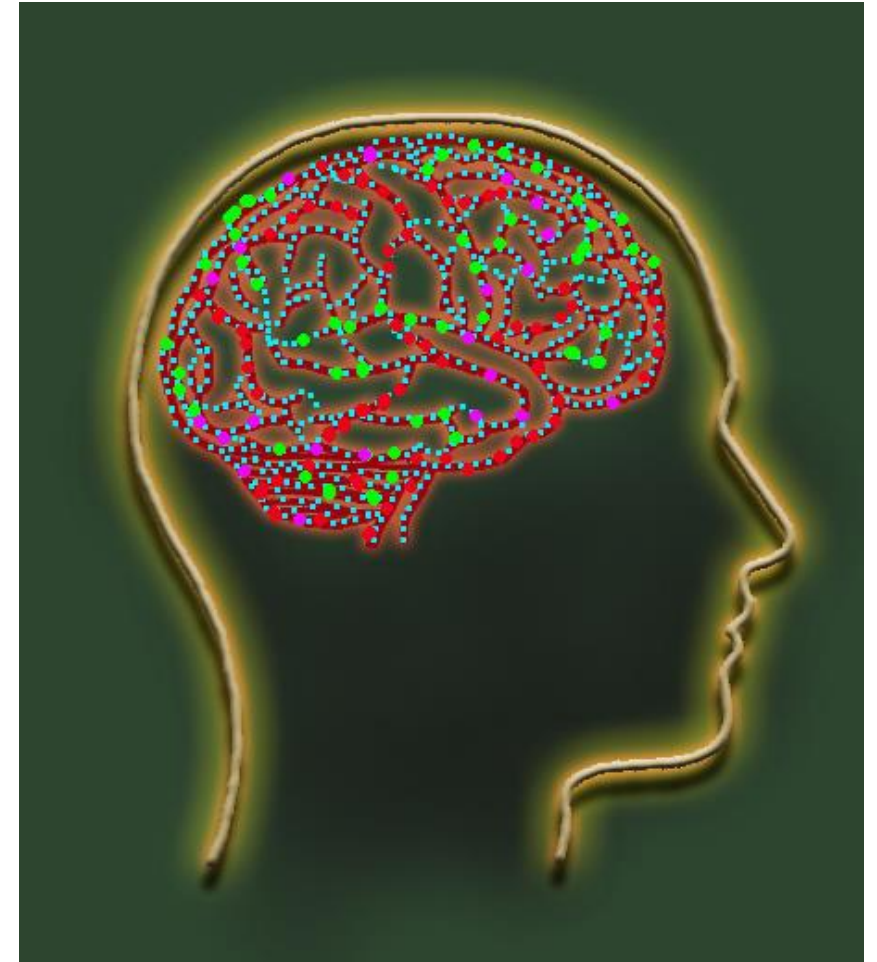
Credit: Martin Allison



# Generalized Nonmotor Onset: Absence

---

- May go undetected for an extended period of time
  - May occur multiple times a day
  - May be mistaken for ADD/ADHD in children
- Signs that a student may be experiencing non-convulsive seizures:



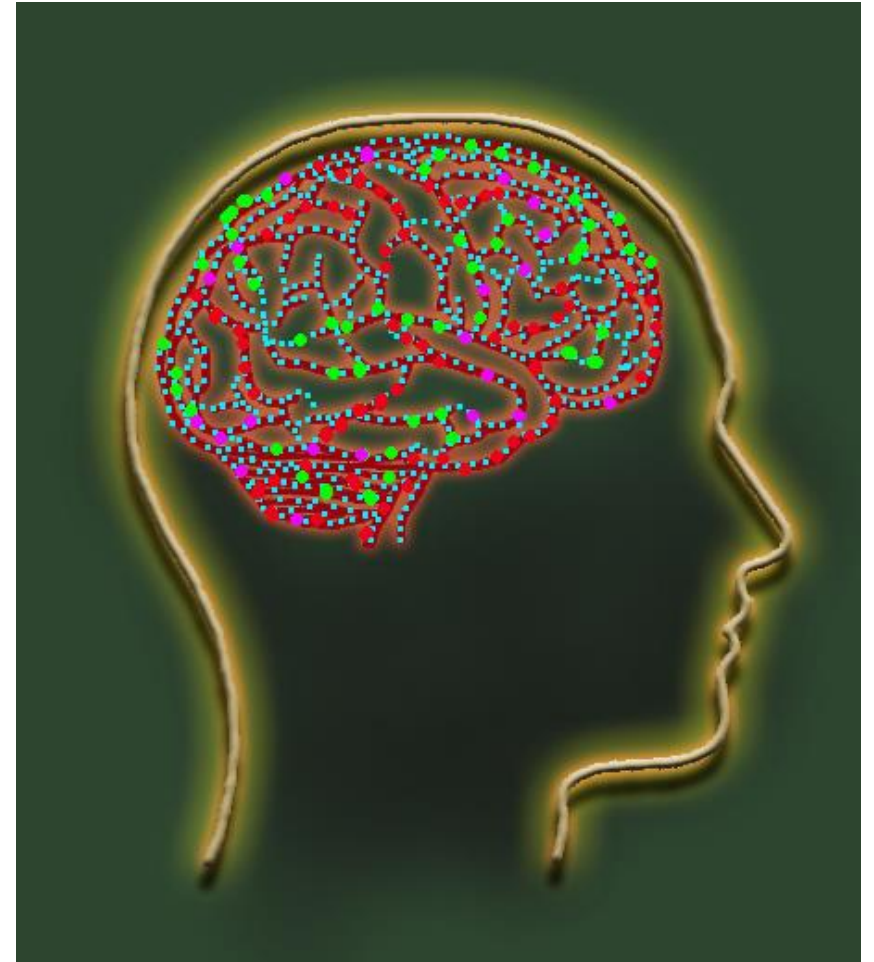
Credit: Martin Allison



# Generalized Nonmotor Onset: Absence

---

- May go undetected for an extended period of time
  - May occur multiple times a day
  - May be mistaken for ADD/ADHD in children
- Signs that a student may be experiencing non-convulsive seizures:
  - Frequent periods of confusion, picking at clothes, lip smacking



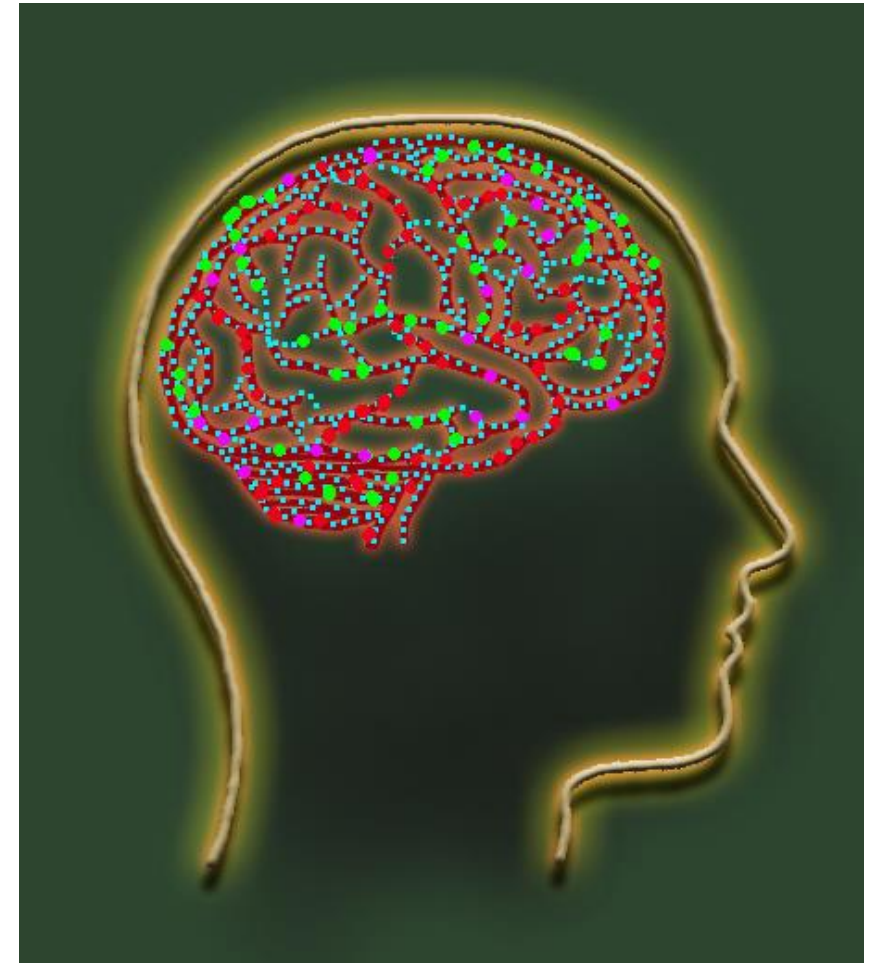
Credit: Martin Allison



# Generalized Nonmotor Onset: Absence

---

- May go undetected for an extended period of time
  - May occur multiple times a day
  - May be mistaken for ADD/ADHD in children
- Signs that a student may be experiencing non-convulsive seizures:
  - Frequent periods of confusion, picking at clothes, lip smacking
  - Difficulty following along in class



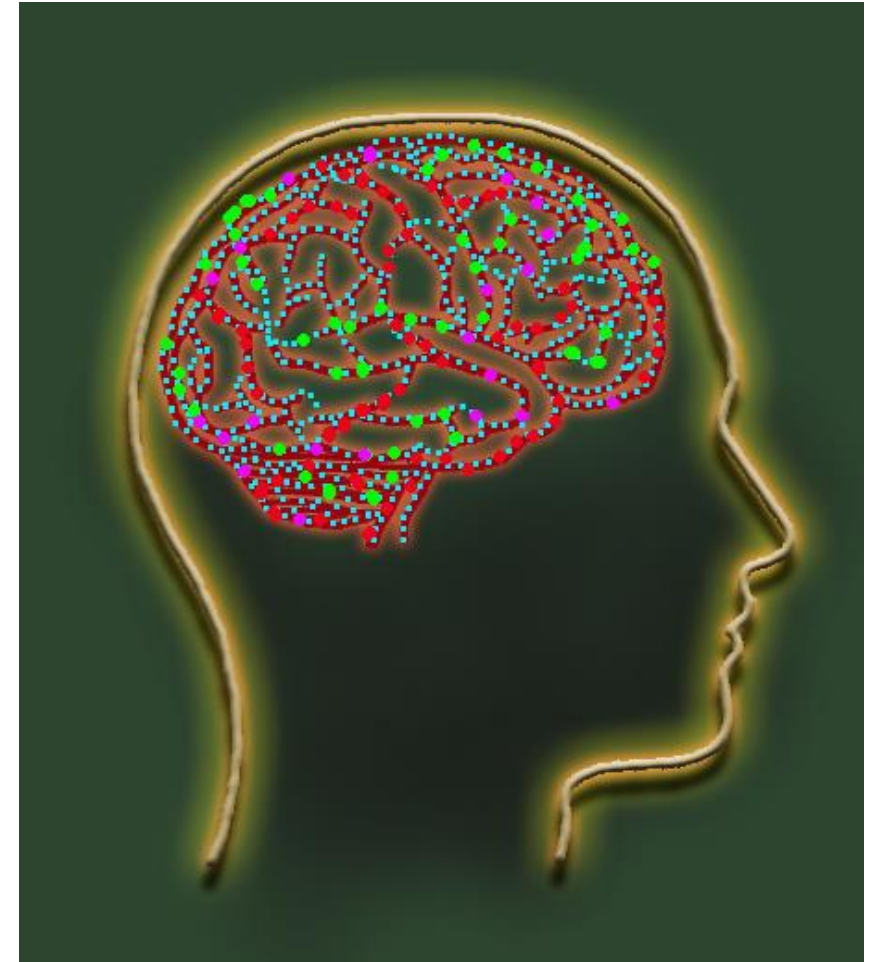
Credit: Martin Allison





# Generalized Nonmotor Onset: Absence

- May go undetected for an extended period of time
  - May occur multiple times a day
  - May be mistaken for ADD/ADHD in children
- Signs that a student may be experiencing non-convulsive seizures:
  - Frequent periods of confusion, picking at clothes, lip smacking
  - Difficulty following along in class
  - Decline in academic work



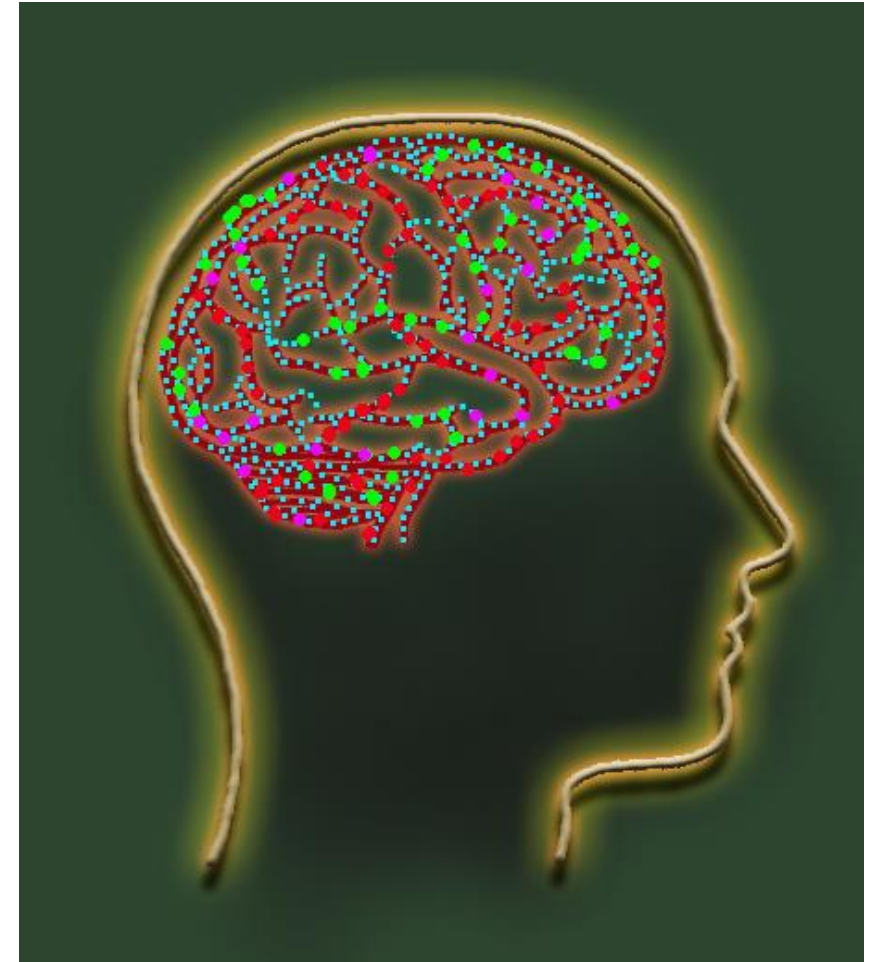
Credit: Martin Allison





# Generalized Nonmotor Onset: Absence

- May go undetected for an extended period of time
  - May occur multiple times a day
  - May be mistaken for ADD/ADHD in children
- Signs that a student may be experiencing non-convulsive seizures:
  - Frequent periods of confusion, picking at clothes, lip smacking
  - Difficulty following along in class
  - Decline in academic work
  - Perceived difficulty with remembering assignments/tasks



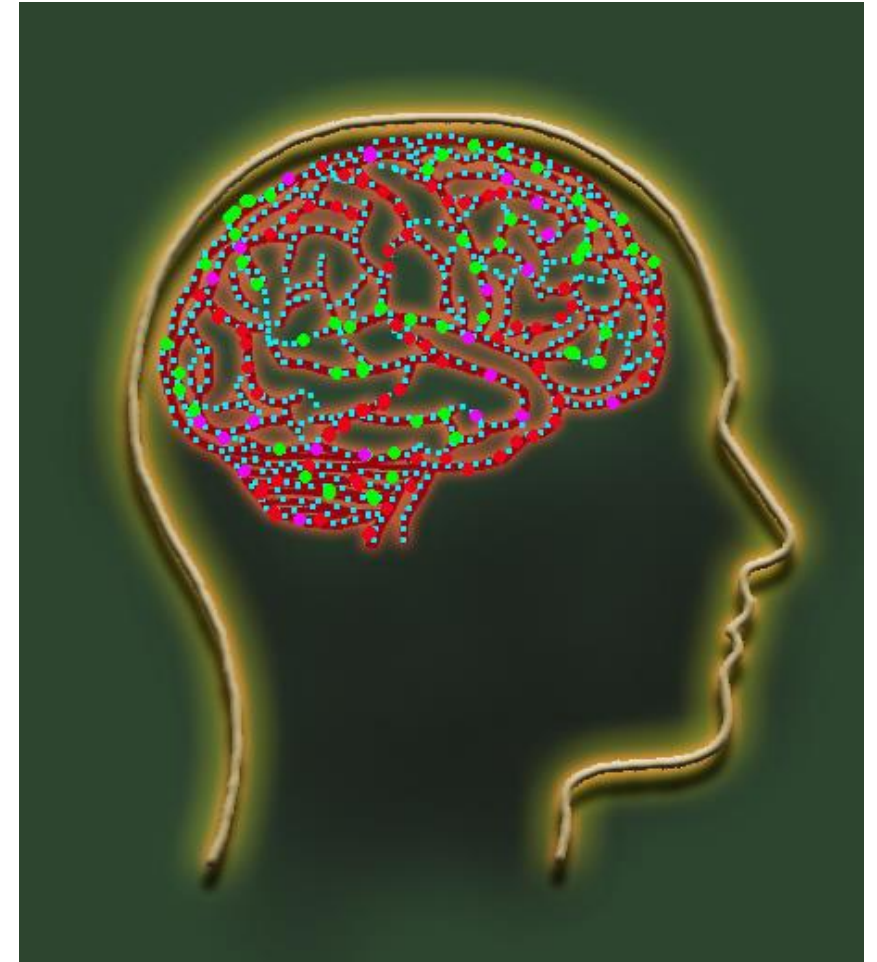
Credit: Martin Allison



# Generalized Nonmotor Onset: Absence

---

- May go undetected for an extended period of time
  - May occur multiple times a day
  - May be mistaken for ADD/ADHD in children
- Signs that a student may be experiencing non-convulsive seizures:
  - Frequent periods of confusion, picking at clothes, lip smacking
  - Difficulty following along in class
  - Decline in academic work
  - Perceived difficulty with remembering assignments/tasks
  - Changes in emotion/behavior



Credit: Martin Allison



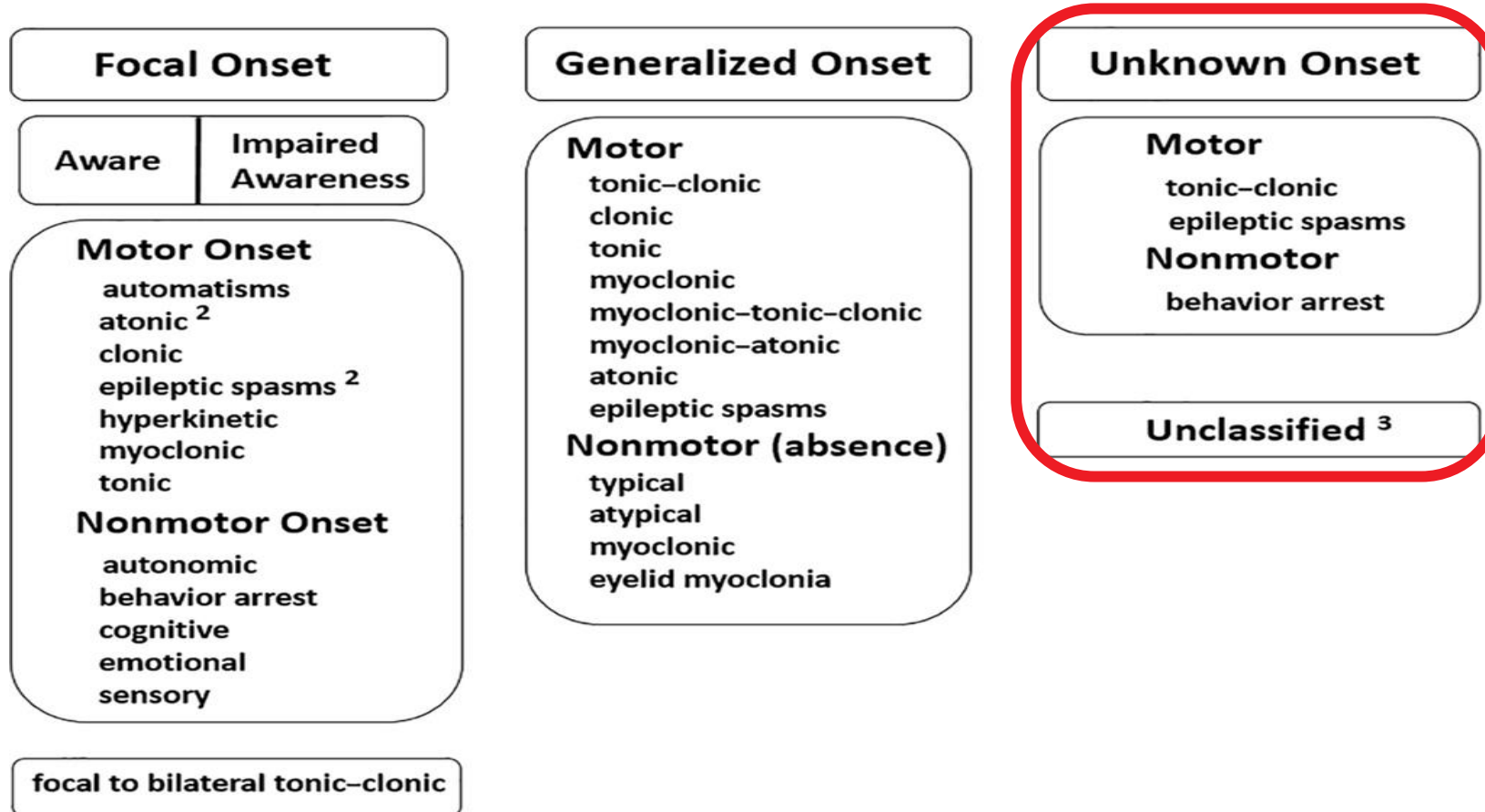
# Unknown Onset Seizures

---



# ILAE 2017 Classification of Seizures

## ILAE Classification of Seizure Types Expanded Version <sup>1</sup>

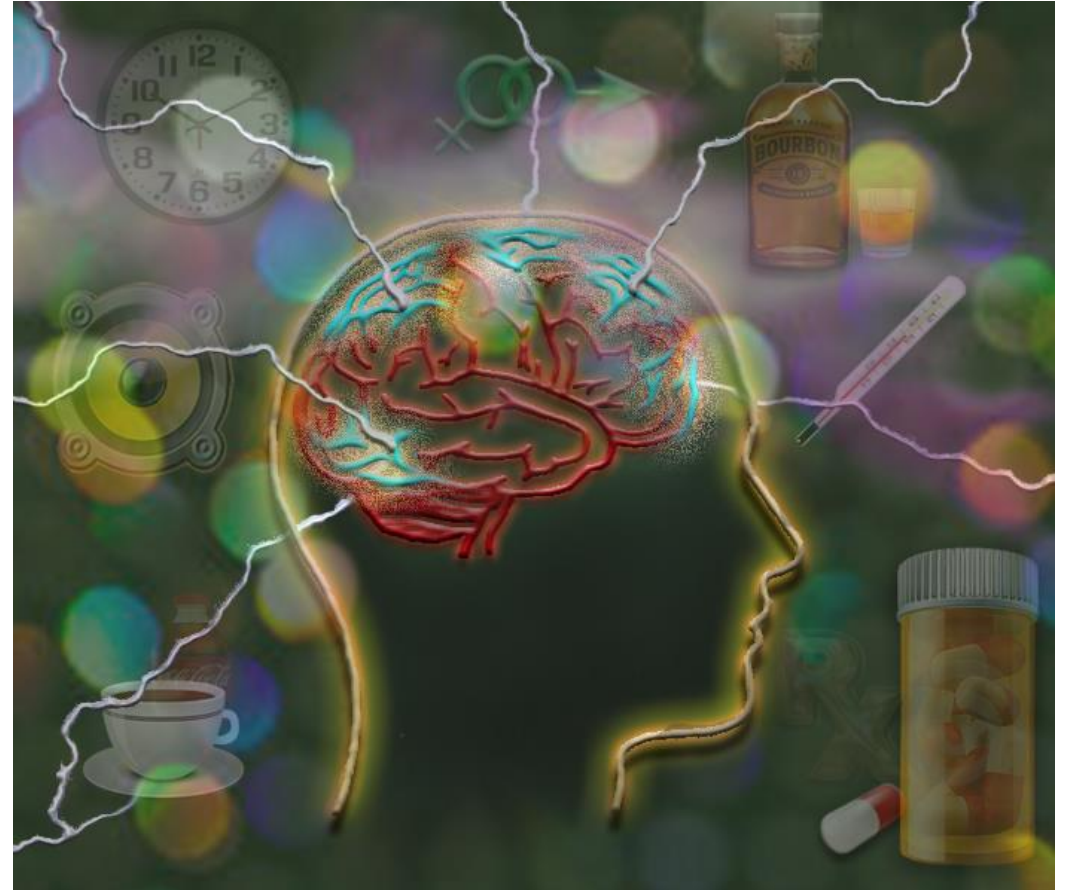


# Unknown Onset

Motor

Nonmotor

Unclassified



Credit: Martin Allison





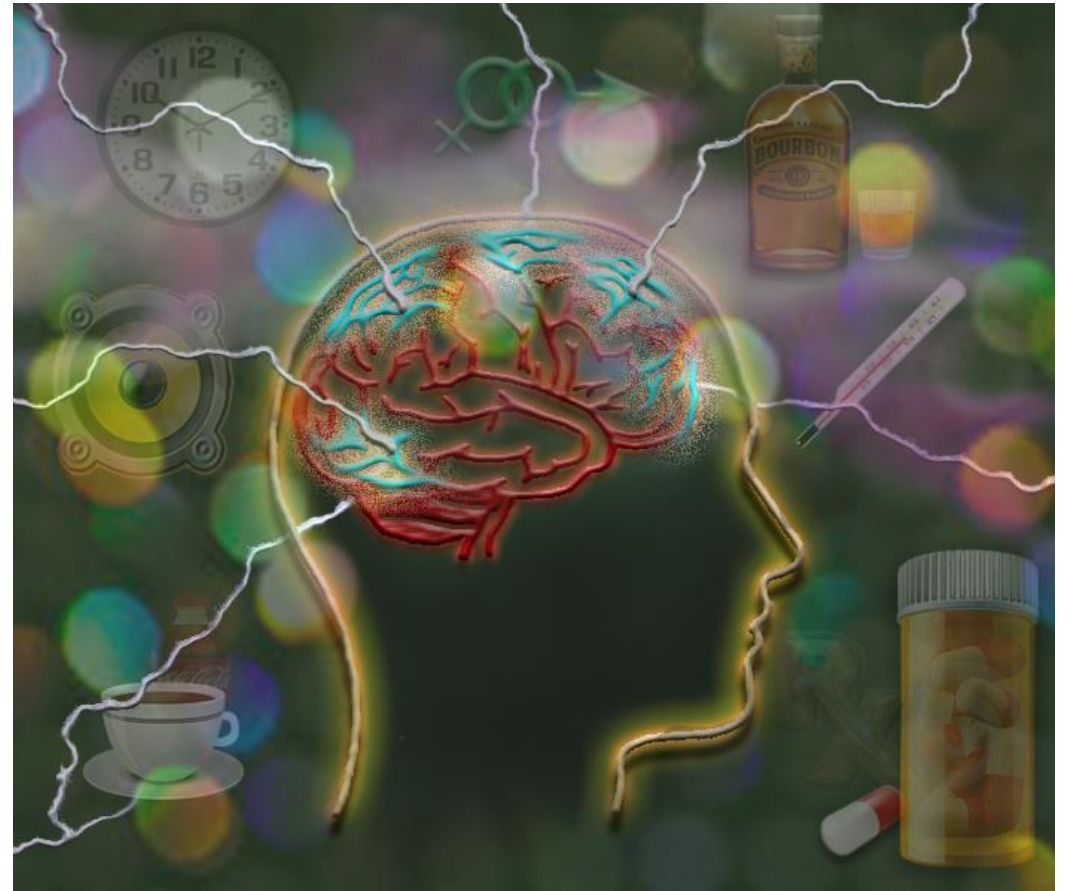
# Unknown Onset

## Motor

- Tonic-clonic
- Epileptic spasms

## Nonmotor

## Unclassified



Credit: Martin Allison





# Unknown Onset

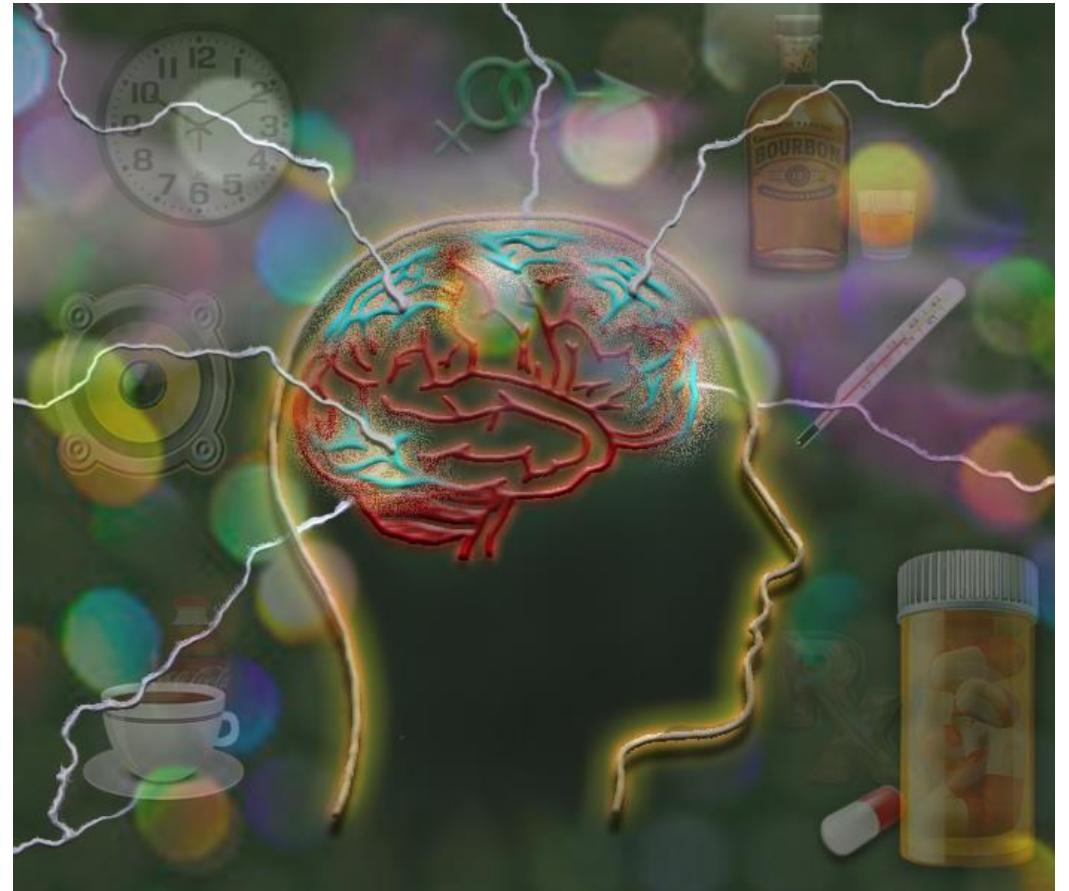
## Motor

- Tonic-clonic
- Epileptic spasms

## Nonmotor

- Behavioral arrest

## Unclassified



Credit: Martin Allison



# Unknown Onset

## Motor

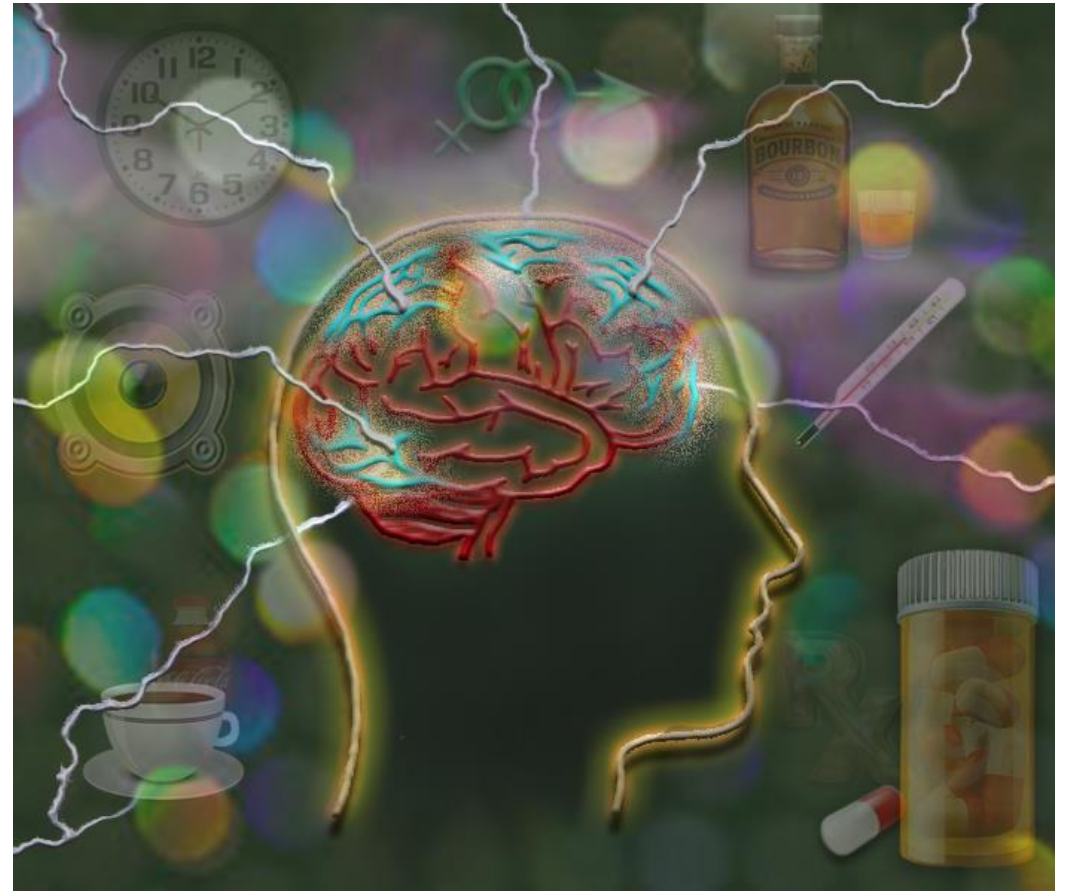
- Tonic-clonic
- Epileptic spasms

## Nonmotor

- Behavioral arrest

## Unclassified

- A seizure may be unclassified due to inadequate information or inability to place the type in other categories



Credit: Martin Allison



# How Can I Use This Information?

---

Pause and think about how you can use the information discussed in this section in your daily practice.



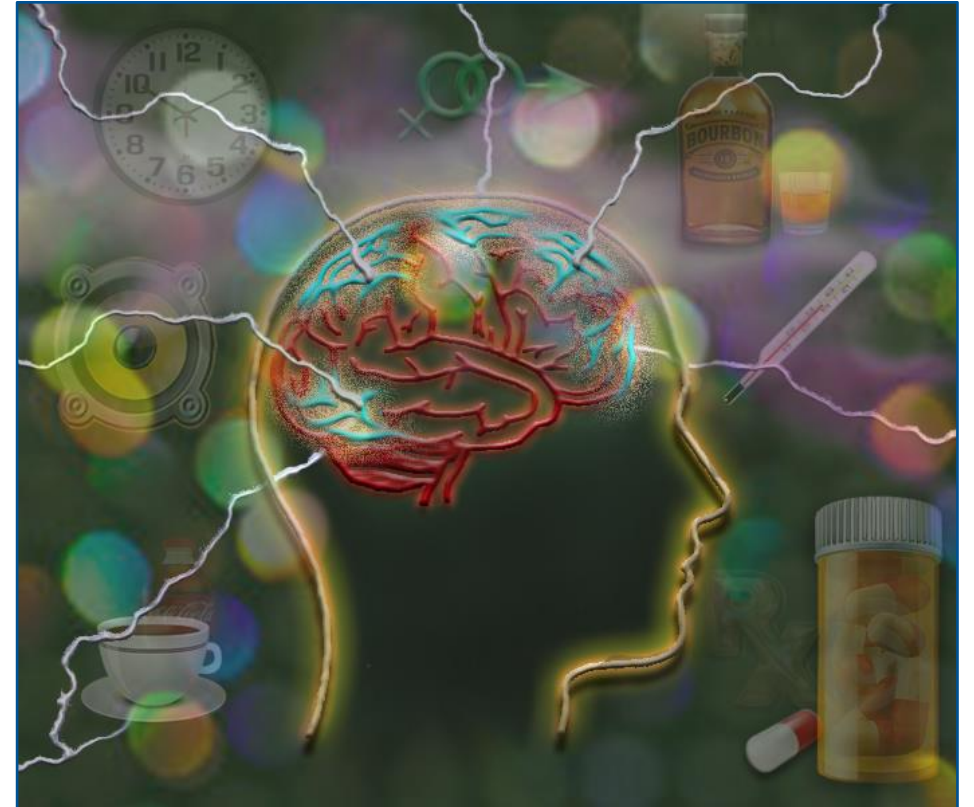
Credit: Deposit Photos



# Review

---

Now that we have:



Credit: Martin Allison



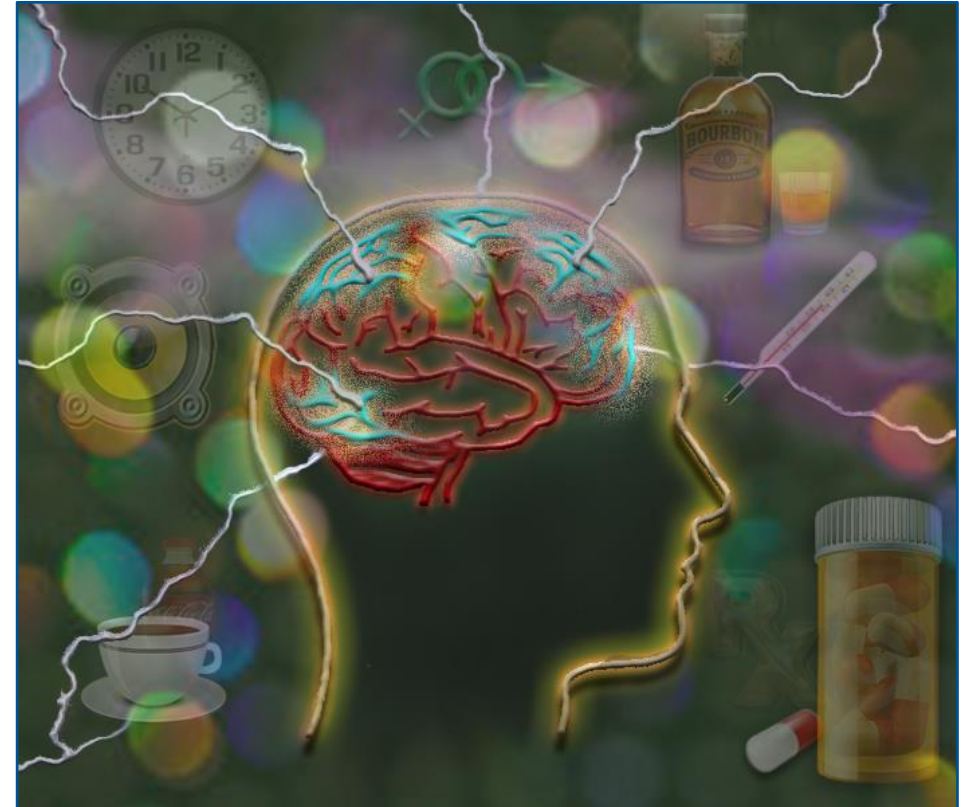


# Review

---

Now that we have:

- List the phases of a seizure



Credit: Martin Allison

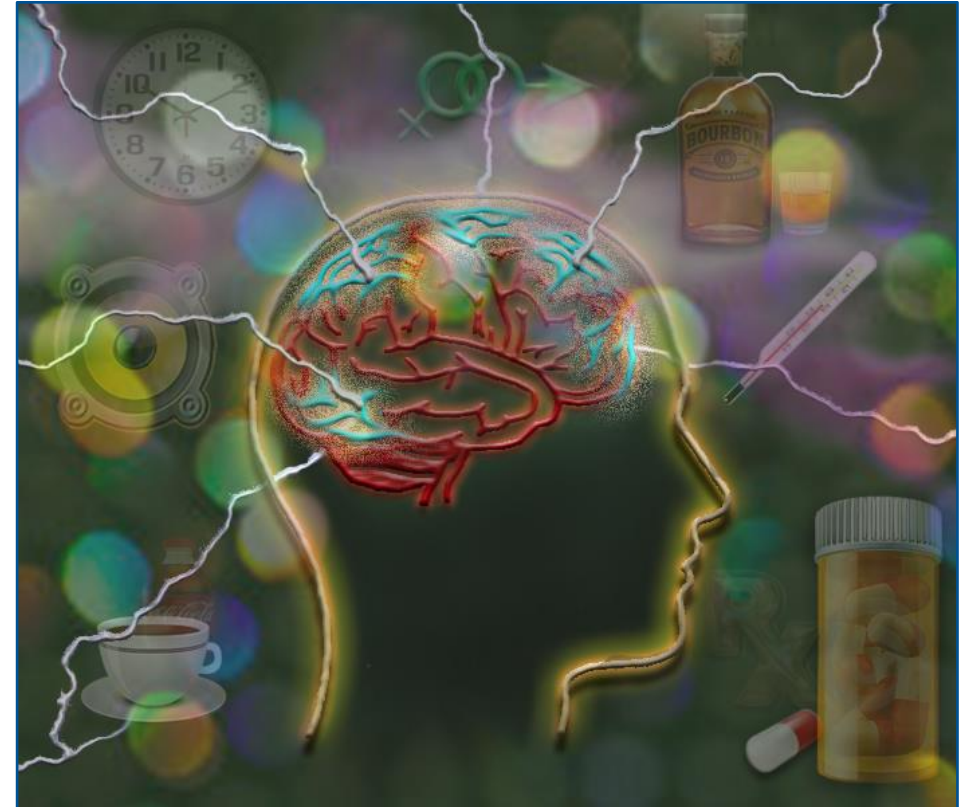


# Review

---

Now that we have:

- List the phases of a seizure
- Explain the changes in seizure classification



Credit: Martin Allison



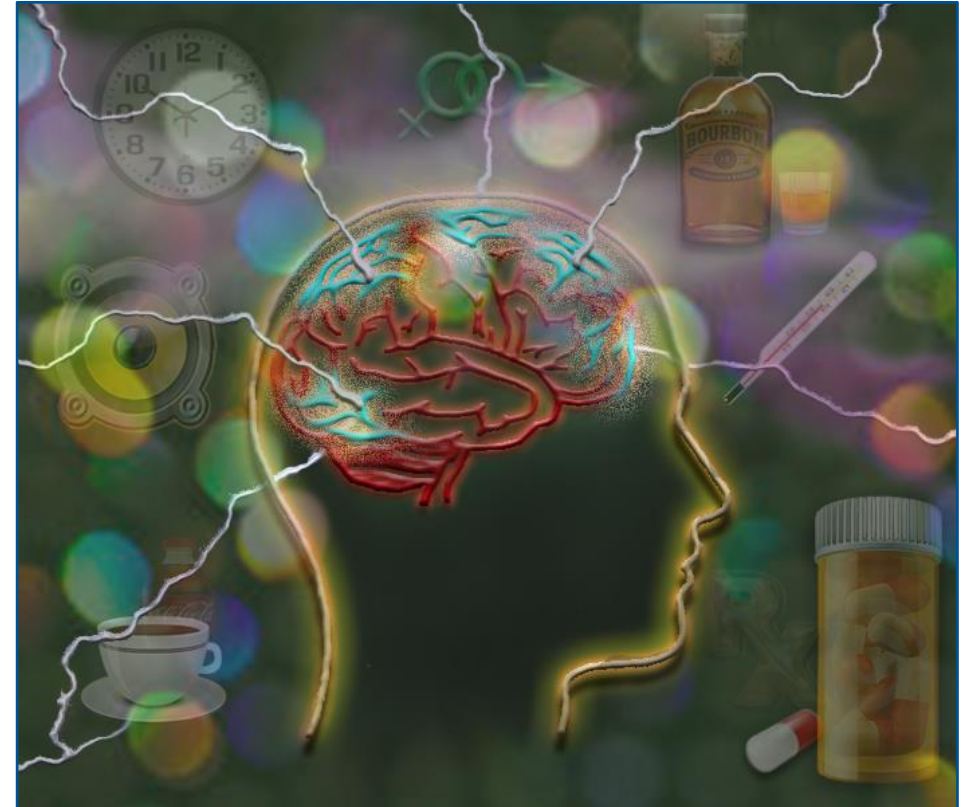


# Review

---

Now that we have:

- List the phases of a seizure
- Explain the changes in seizure classification
- Describe the different types of seizures as classified by the ILAE



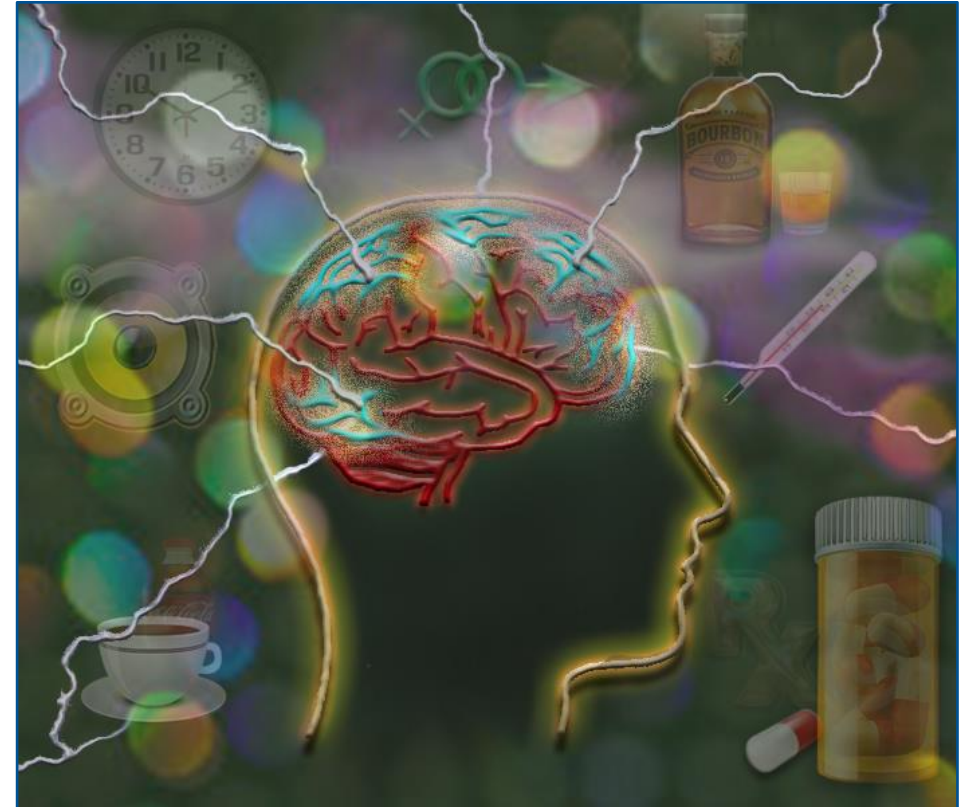
Credit: Martin Allison



# Wrap-Up

---

Let's wrap up this video by looking at the Children's Healthcare of Atlanta Epilepsy program and additional resources for you to use.



Credit: Martin Allison



# Resources

---

Web Address	Resource
<a href="http://epilepsy.com">epilepsy.com</a>	Epilepsy Foundation
<a href="http://seizuretracker.com">seizuretracker.com</a>	Seizure Self Management App (Free)
<a href="http://cdc.gov/epilepsy">cdc.gov/epilepsy</a>	Center for Disease Control Epilepsy Program
<a href="http://aesnet.org">aesnet.org</a>	American Epilepsy Society
<a href="http://webease.org">webease.org</a>	Web Based Self Management Program (Free)
<a href="http://choa.org/medical-services/neurosciences/epilepsy">choa.org/medical-services/neurosciences/epilepsy</a>	Children's Healthcare of Atlanta Comprehensive Epilepsy Center Susan McCallum 404-785-3720 <a href="mailto:Susan.McCallum@choa.org">Susan.McCallum@choa.org</a>



# Epilepsy Care in a School Setting

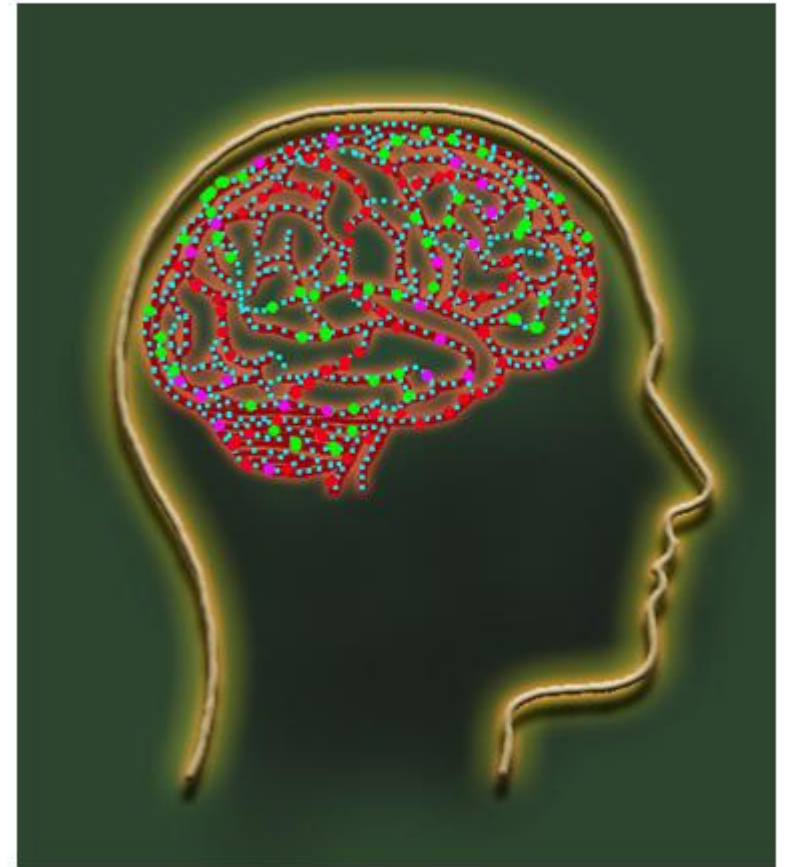
---



# Epilepsy Care in a School Setting

---

## 1. Overview of Epilepsy



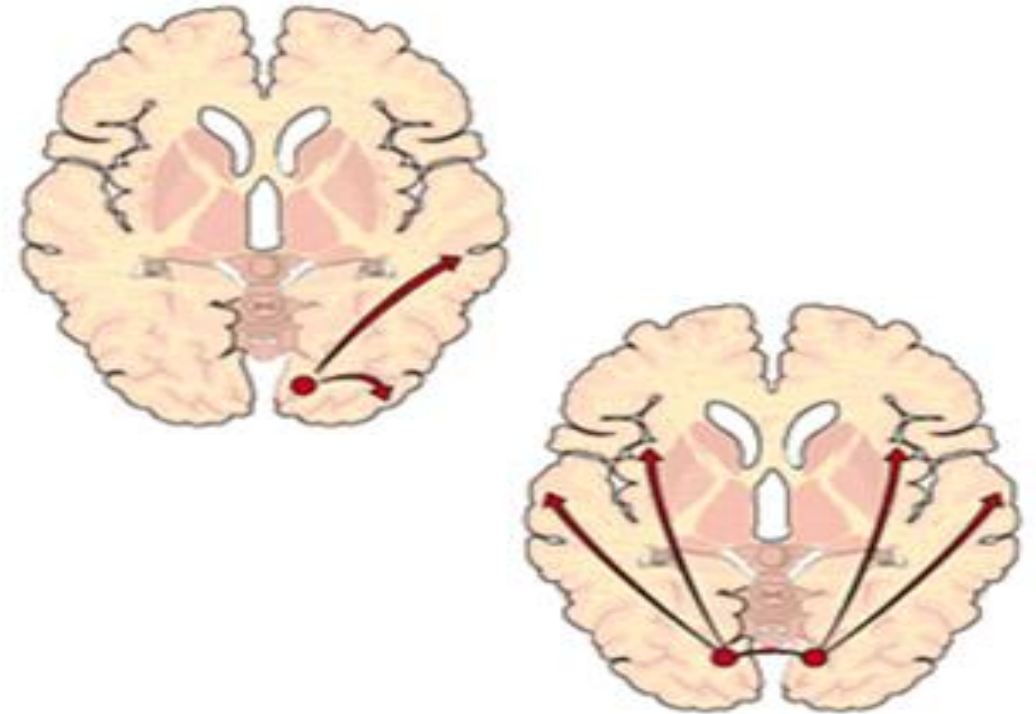
Credit: Martin Allison



# Epilepsy Care in a School Setting

---

1. Overview of Epilepsy
2. Seizure Phases and Classifications





# Epilepsy Care in a School Setting

---

1. Overview of Epilepsy
2. Seizure Phases and Classifications
3. Seizure Diagnostics and Treatments



Credit: Children's Healthcare of Atlanta

# Epilepsy Care in a School Setting

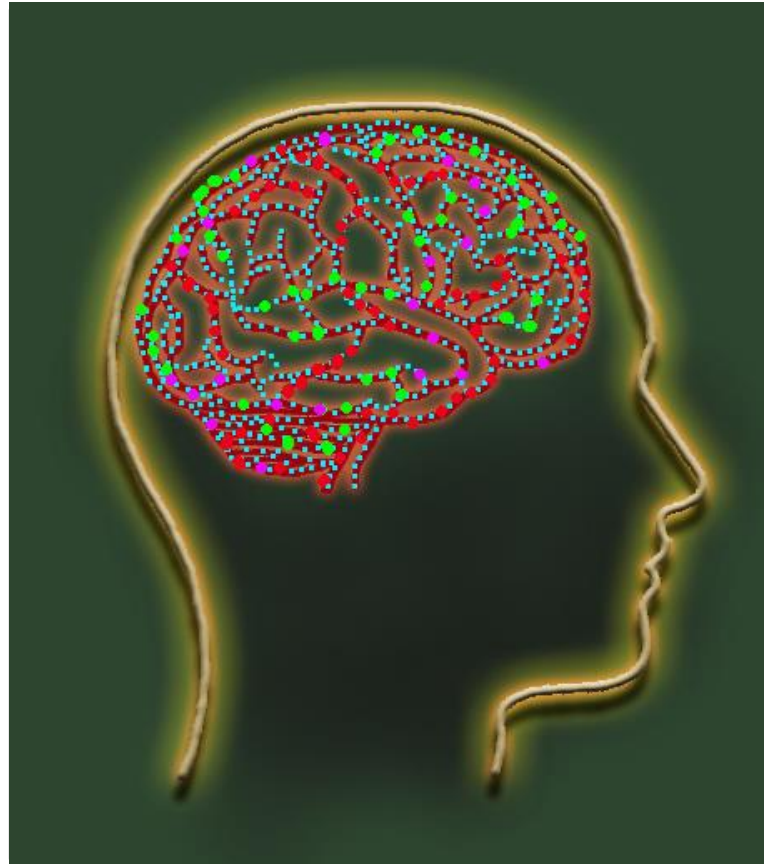
---

1. Overview of Epilepsy
2. Seizure Phases and Classifications
3. Seizure Diagnostics and Treatments
4. Seizure First Aid



Credit: Deposit Photos





Credit: Martin Allison

# Epilepsy Seizure Phases & Classifications

---

Children's Comprehensive Epilepsy Center

Presented by Susan McCallum, MSN, RN  
Children's Comprehensive Epilepsy Center  
404-785-3720  
[www.choa.org](http://www.choa.org)

Children's Healthcare of Atlanta





# School Health Resources

Children's works closely with the school health community throughout the state to provide them with educational materials, training and support.

<https://www.choa.org/schoolhealth>

About Us



View all School Health events



# Video & Graphic Credits

---

## Video Credits



**Rectal Diazepam (Diastat)**...University of Wisconsin – Joint Project with Wisconsin Department of Public Instruction

---



**How to Give your Child Midazolam**...Children's Hospital Colorado

## Photo & Graphics Credits

Martin Allison

Susan McCallum

Mayo Foundation for Medical Education and Research

Deposit Photos



Children's Healthcare of Atlanta

