


Citrix 7.15 - Access



Citrix is the software that operates the Children's Application Portal (CAP). In support of the new look and feel resulting from the Citrix 7.15 upgrade, the below tip sheet instructions have been created.

Access Citrix

To access the Citrix 7.15 platform internally or through VPN  remotely, use the CAP icon on your desktop or visit <http://anywhere.choa.org>.

CAP

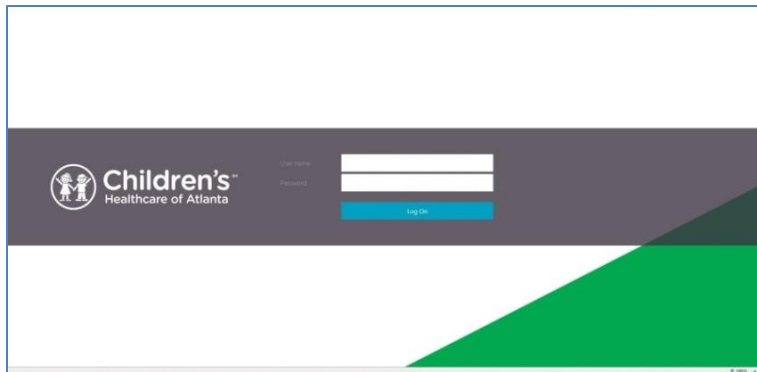


The Citrix login page has a new look.

Old Citrix (version 6.5):



New Citrix (version 7.15):



Users will log in to Citrix 7.15 with the same employee credentials.

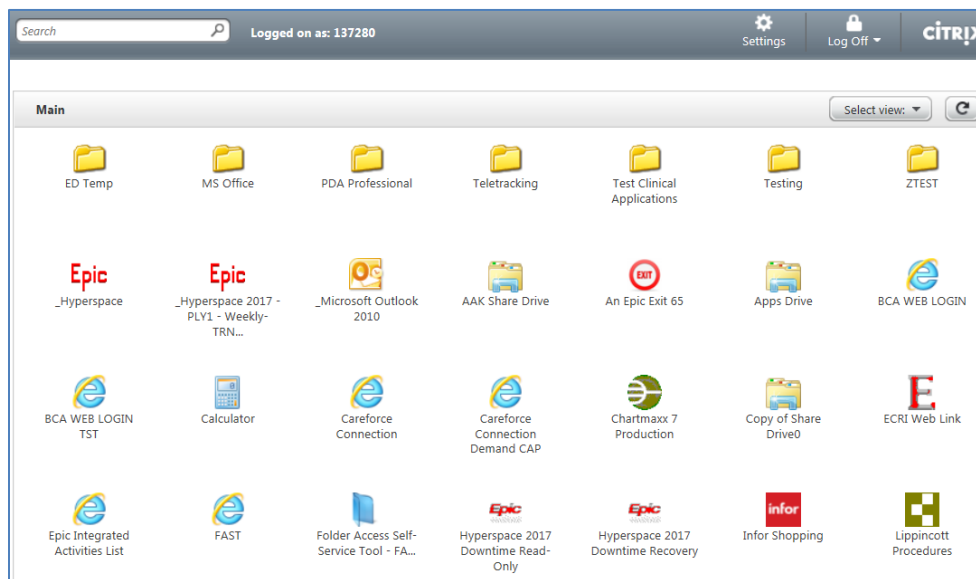
Citrix 7.15 - Access



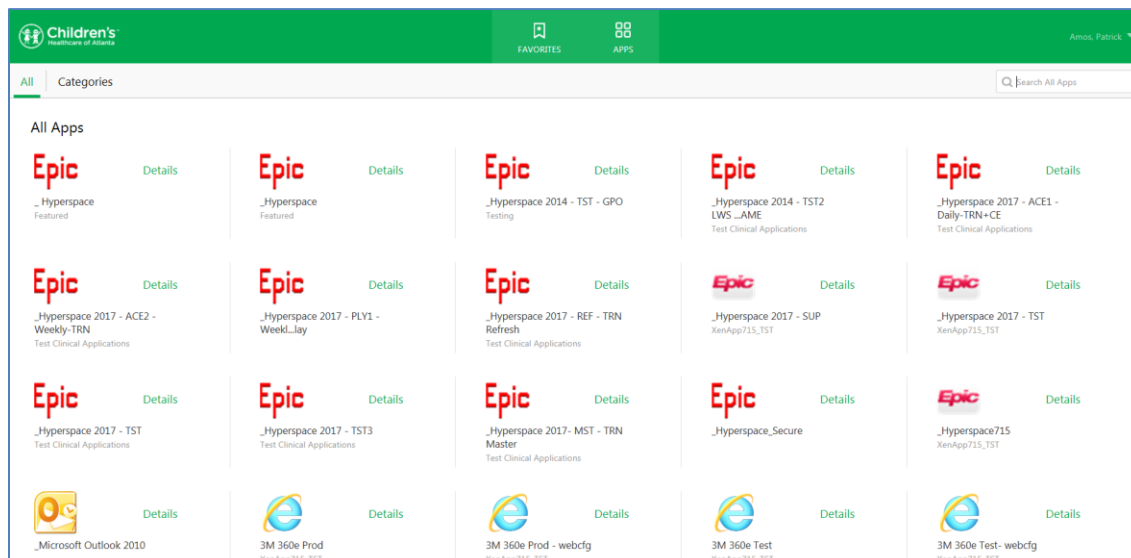
Citrix Applications

On the new Citrix 7.15, applications will appear as large enhanced images.

Old Citrix (version 6.5):



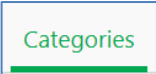
New Citrix (version 7.15):

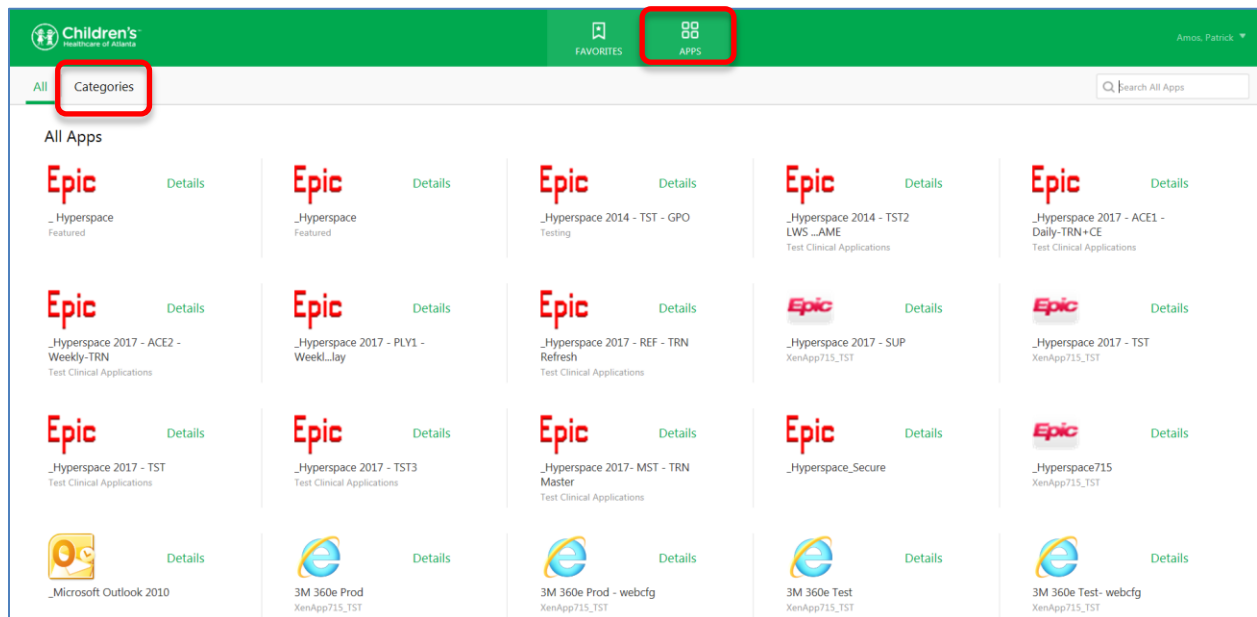


Citrix 7.15 - Access

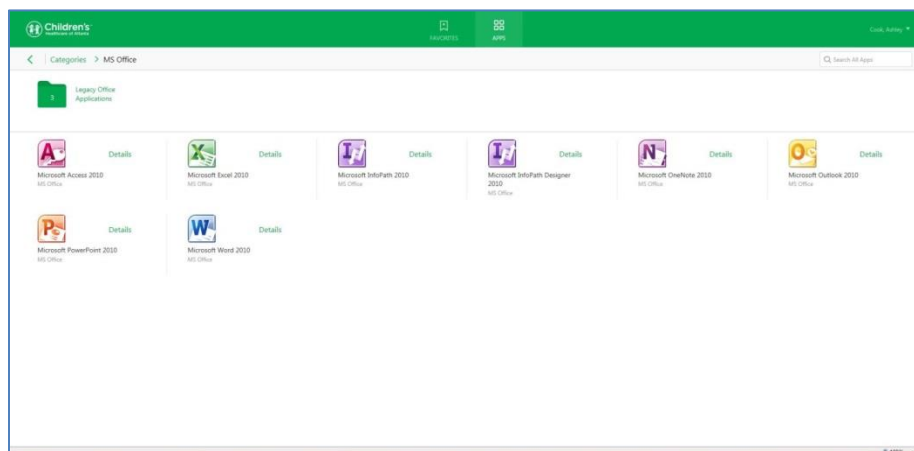


Categories

Select the Apps tab, then Click on Categories  to see some frequently used applications organized in folders by type.



Click on one of the green folders  to view the applications in that folder.



To set applications as favorites, refer to tip sheet “Citrix 7.15 - Customizing the Favorites Tab.”