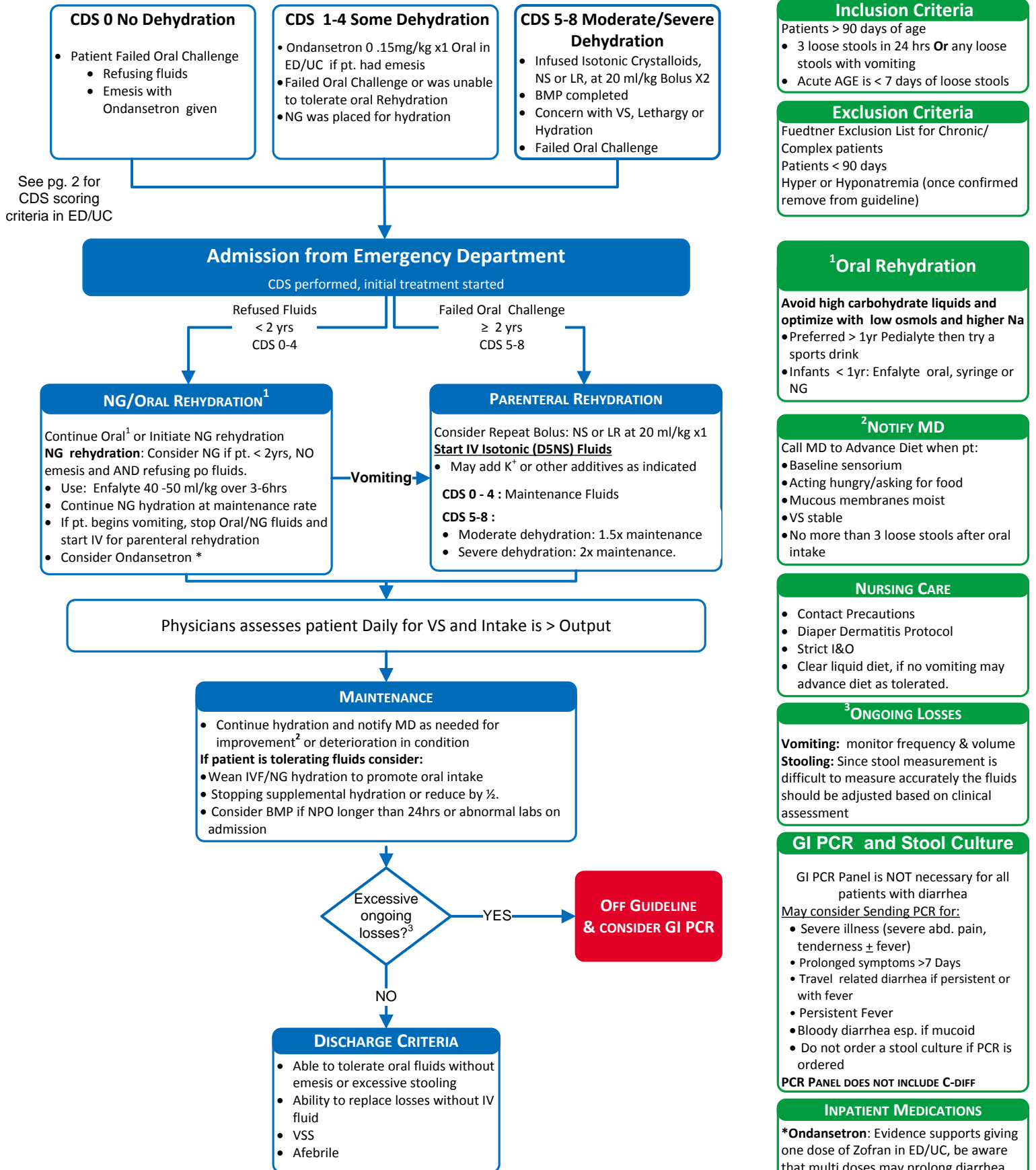


Acute Gastroenteritis (AGE) Clinical Practice Guideline

Inpatient Department Management

FINAL
5.3.18





Patient Presents with ≥ 3 loose stools in 24 hrs.^{1,2}
+/- vomiting; +/- fever

Score the Clinical Dehydration Scale (CDS)

Score each element as 0, 1, or 2 for a total score from 0-8

Characteristics	0	1	2
General appearance	Normal	Thirsty, Restless or Lethargic, but irritable when touched	Drowsy, limp, cold or sweaty, +/- comatose
Eyes	Normal	Slightly sunken	Extremely sunken
Mucous membrane (tongue)	Moist	Sticky	Dry
Tears	Tears	Decreased tears	Absent tears

JPGN. Volume 59, number 1, July 2014, validated for patients < 3yrs, in older patients clinical judgement may supersede the CDS score